

Skrzyżowania oznaczone  
znakami drogowymi.

# Skrzyżowania oznaczone znakami drogowymi



- Ustąp pierwszeństwa przejazdu

(Jeżeli na drodze spotkasz ten znak to musisz ustąpić pierwszeństwa przejazdu pojazdom z lewej i prawej stronie)



- Stop

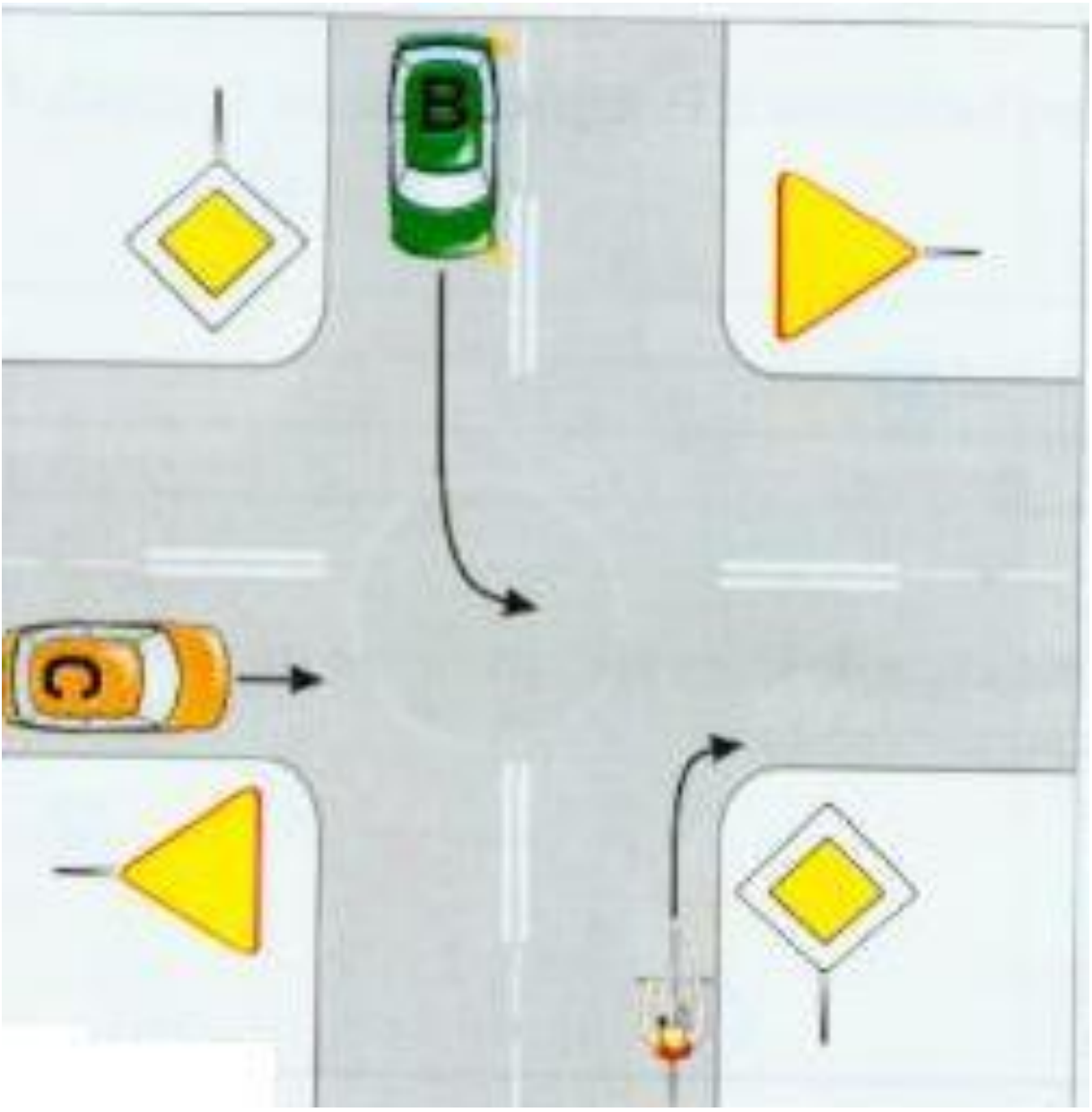
(Jeżeli na drodze spotkasz ten znak, zachowuj się podobnie jak poprzednio z tym, że musisz dodatkowo zatrzymać się)

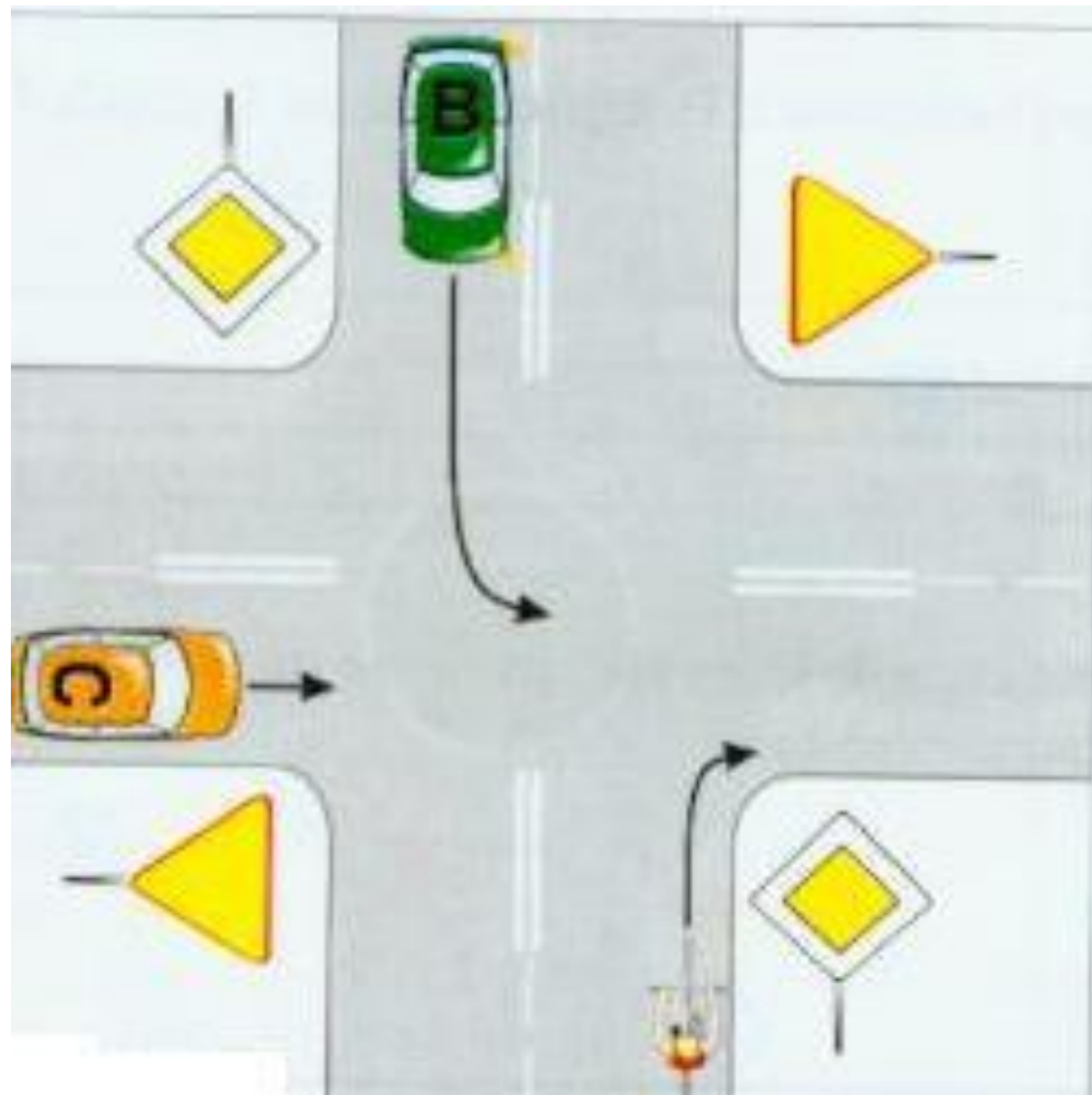


- Droga z pierwszeństwem przejazdu

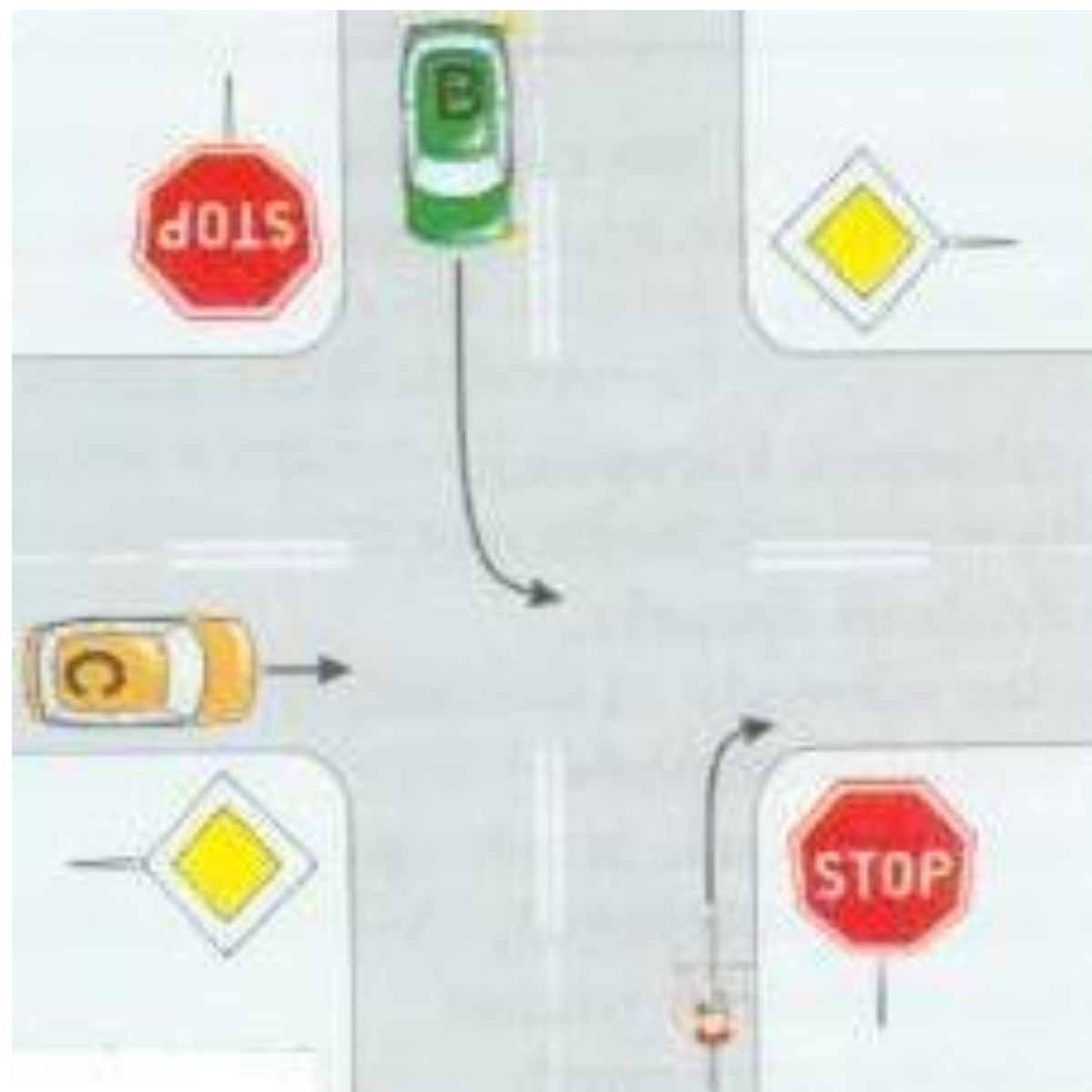


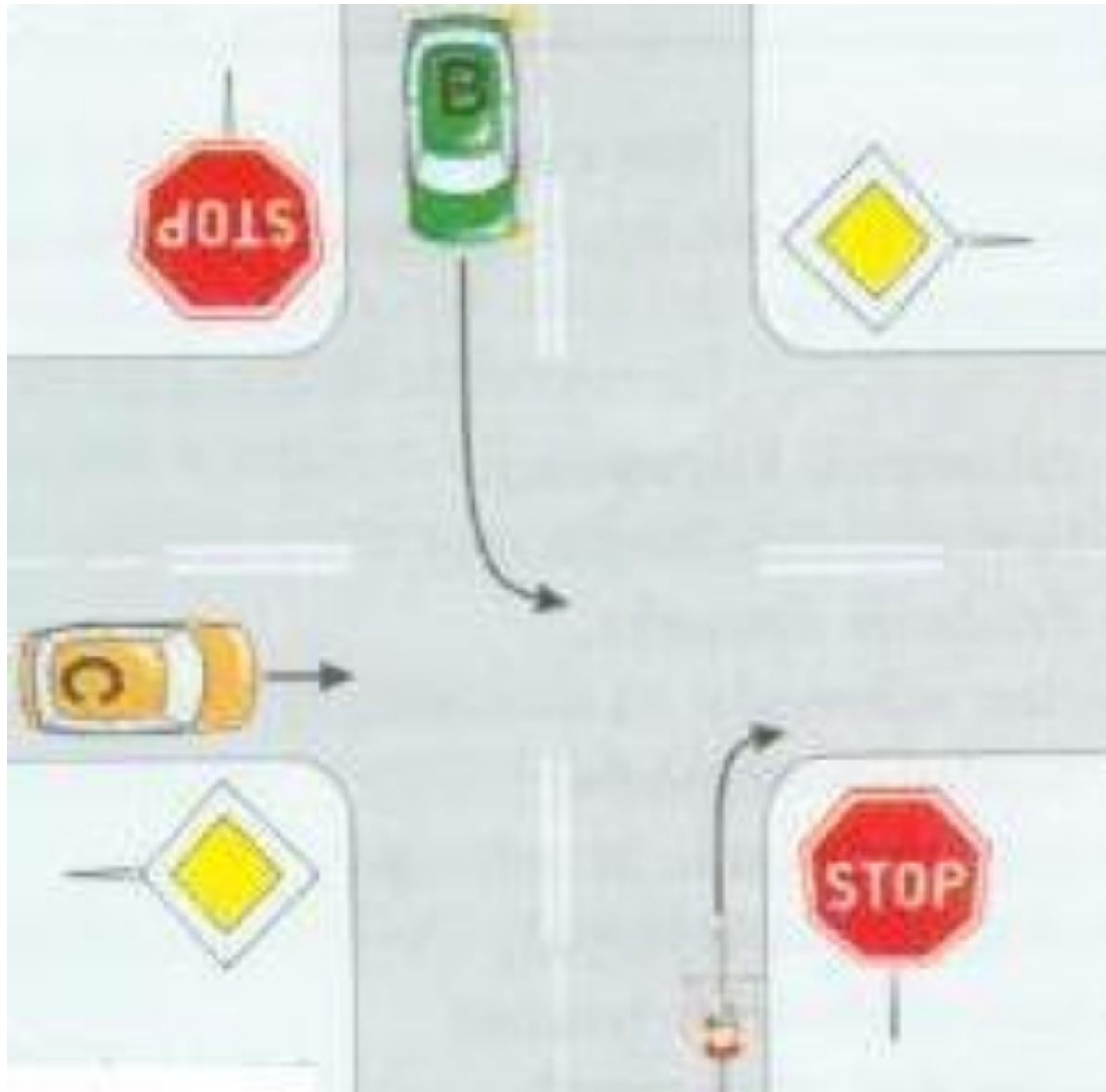
- Tabliczka pod znakiem określa nam przebieg drogi z pierwszeństwem przejazdu przez skrzyżowanie



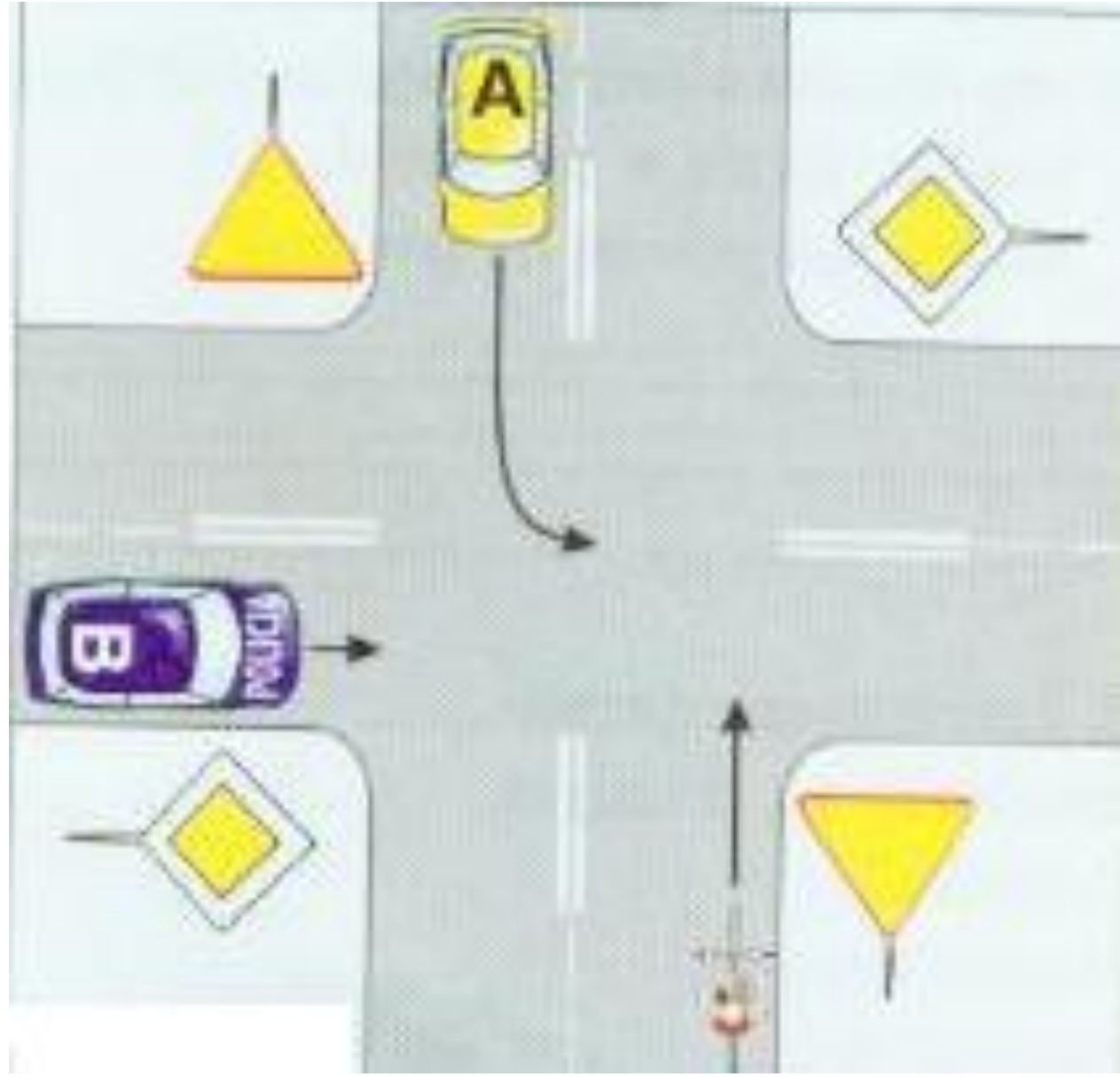


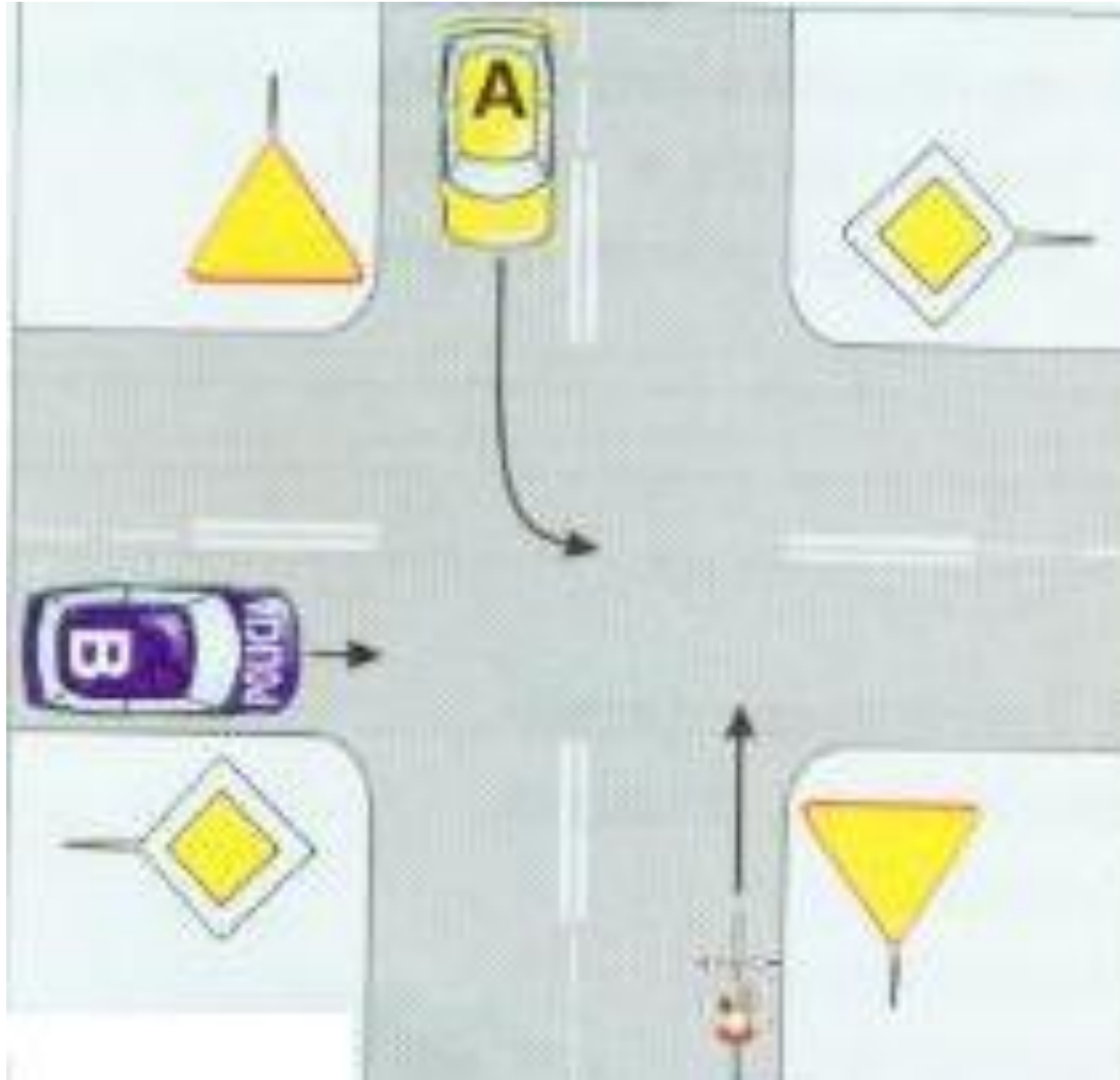
Rower, B, C





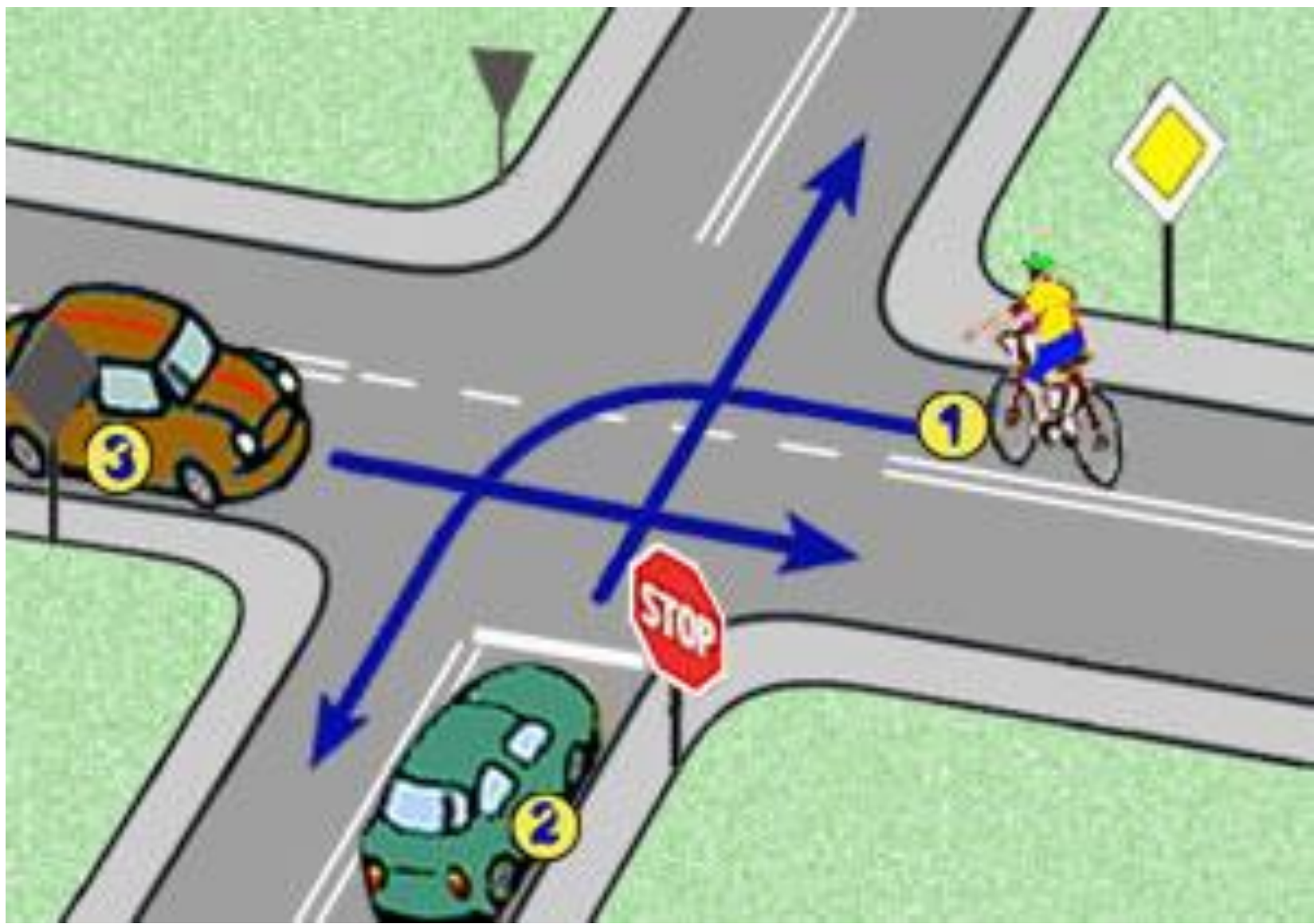
C, row, B

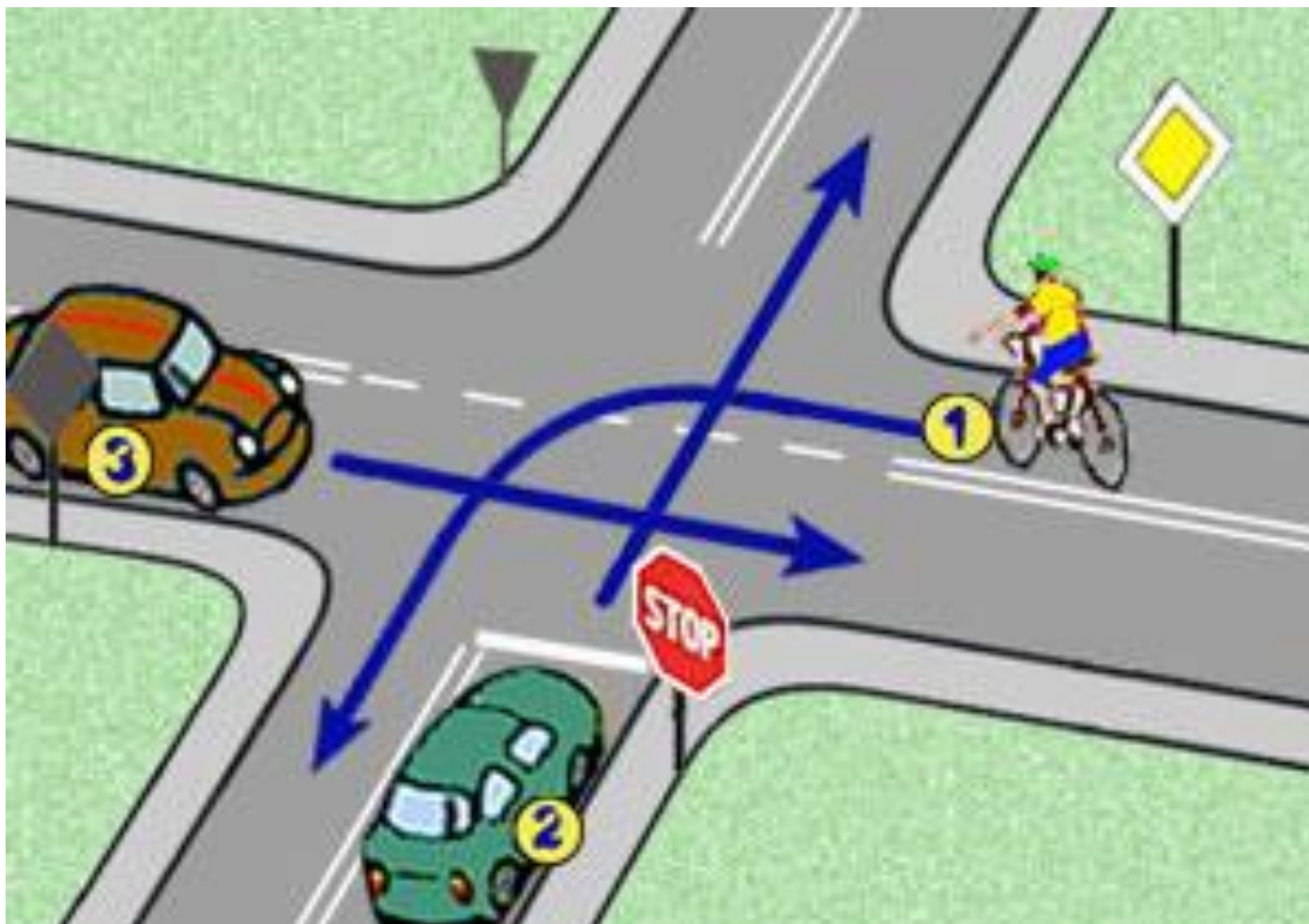




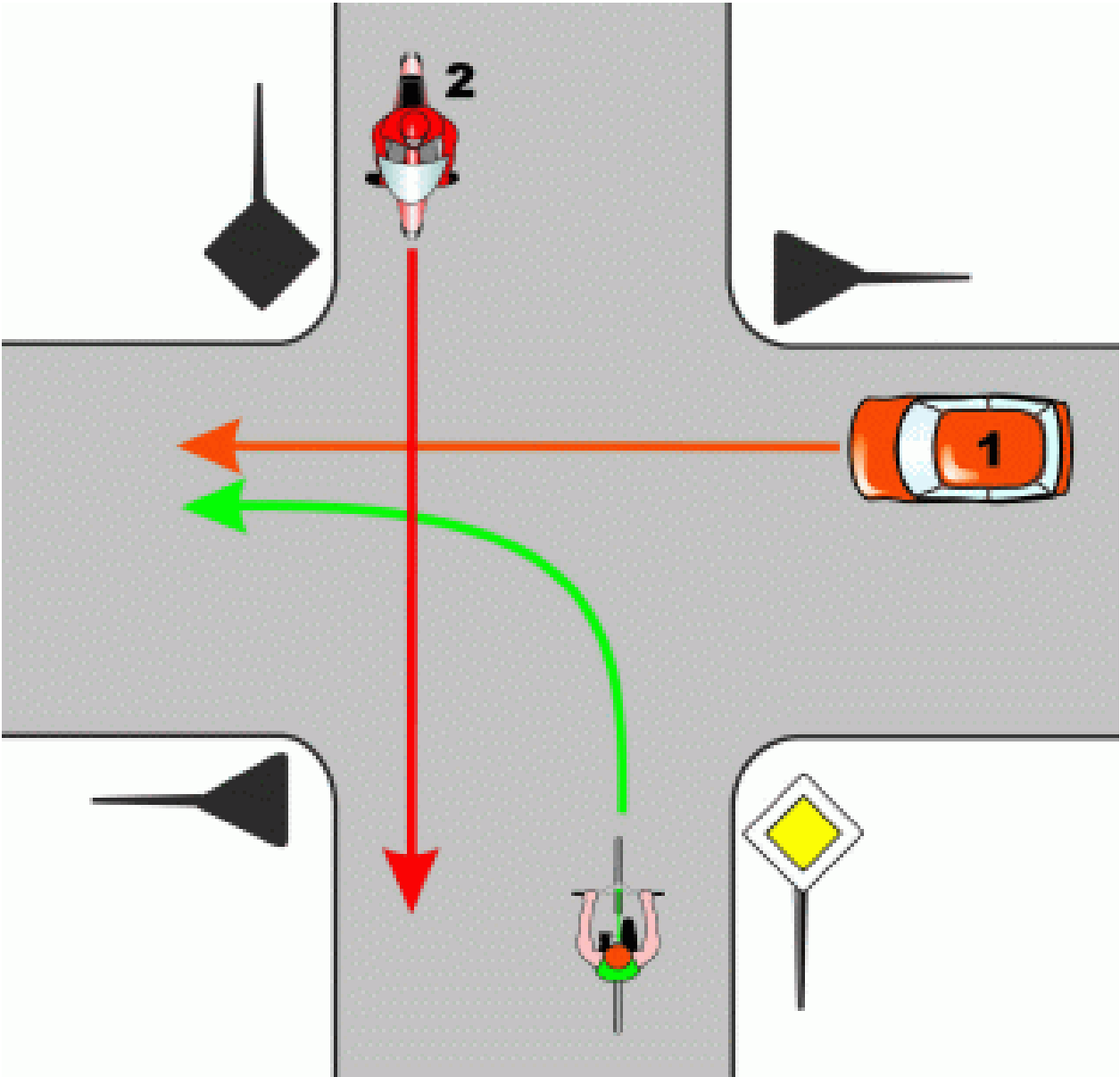
B, row, A

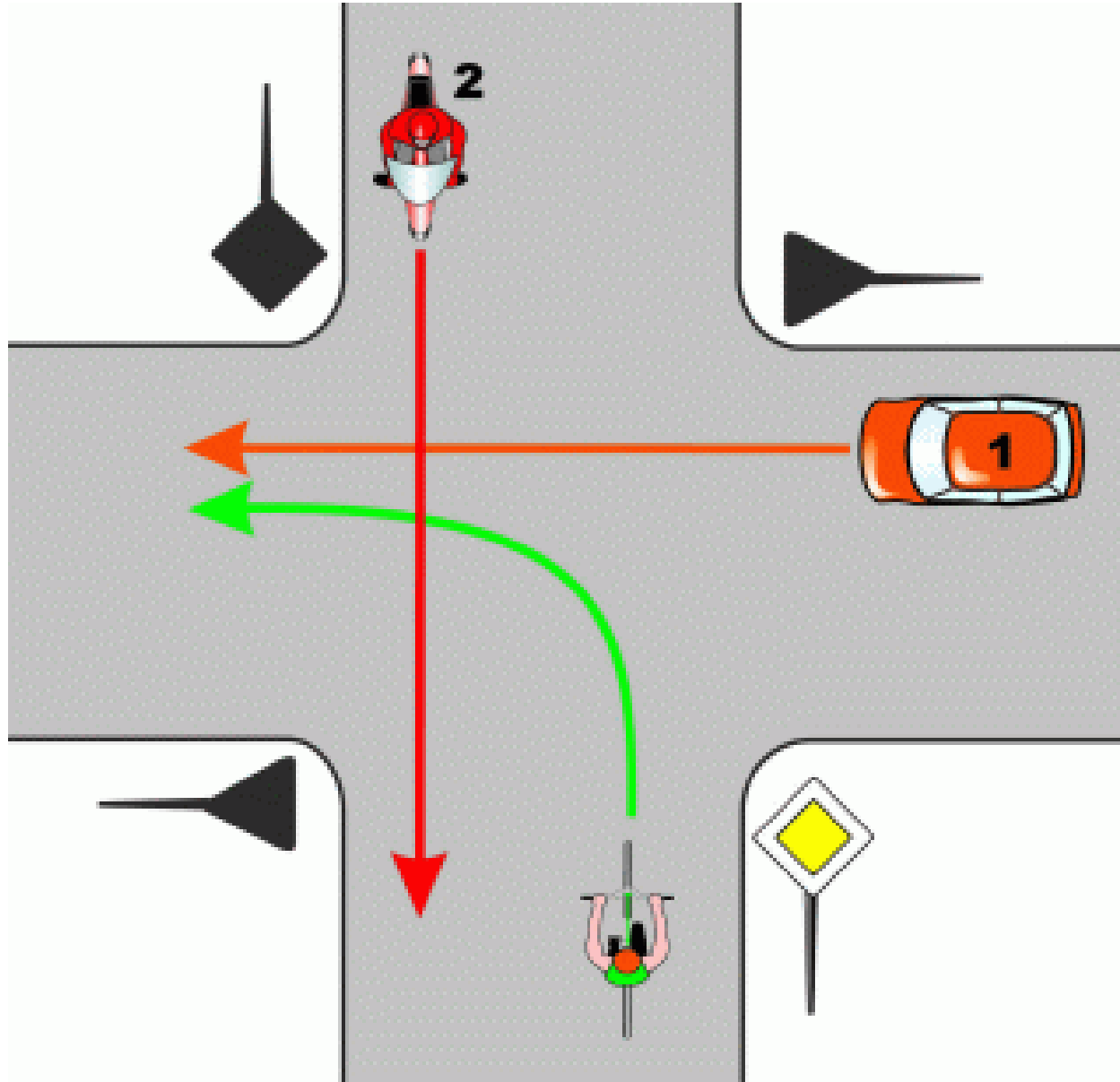




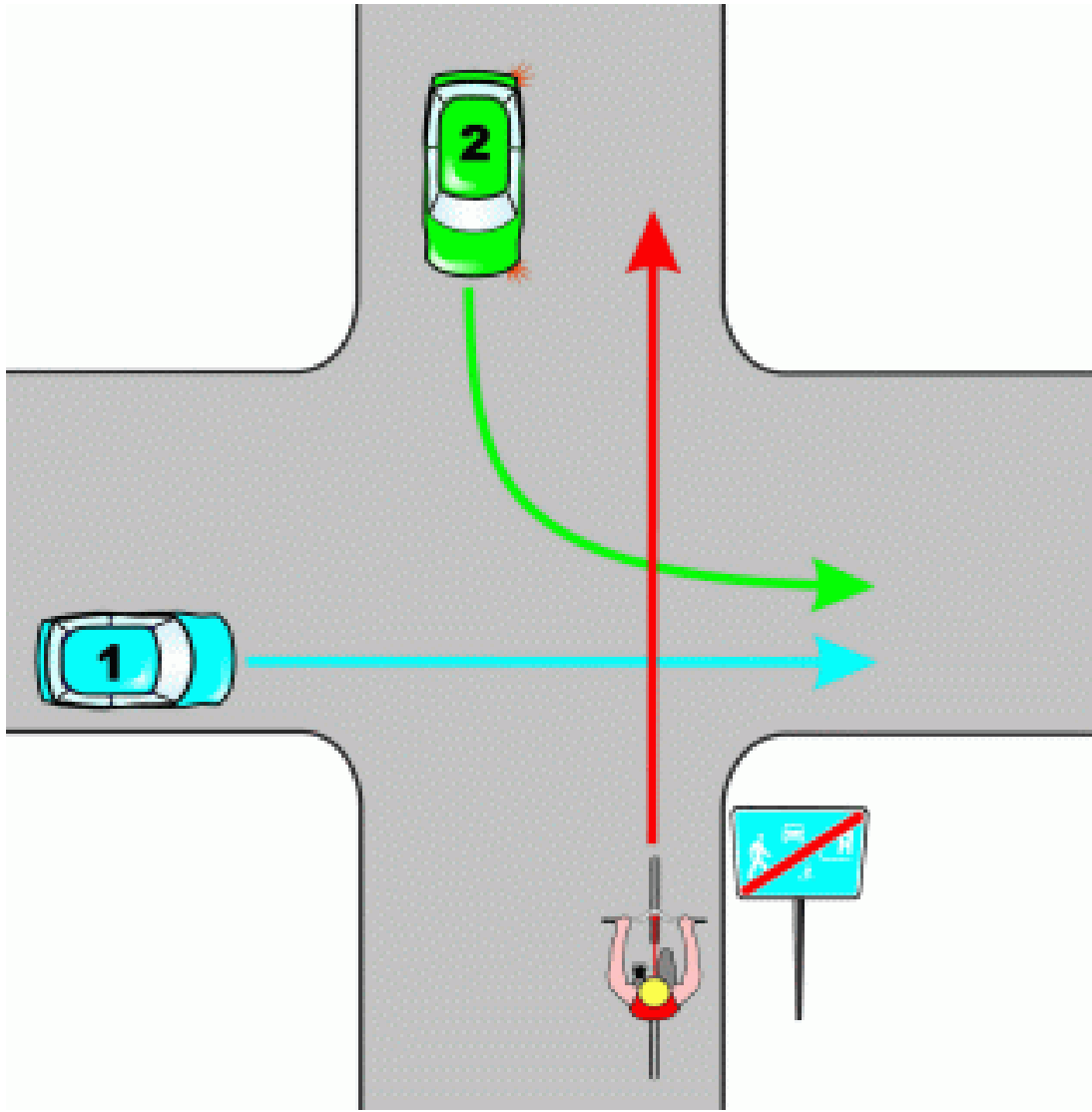


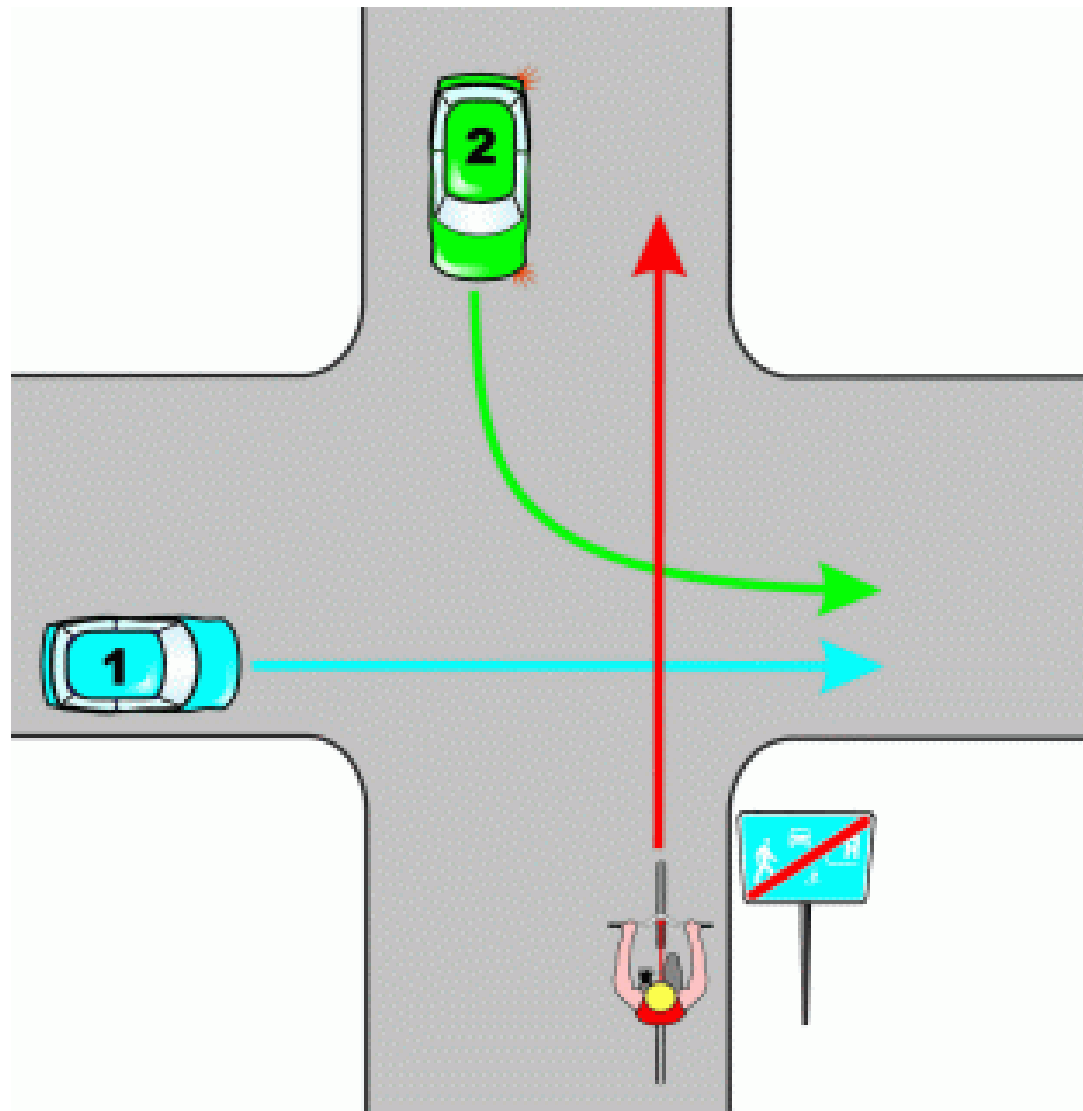
3, 1, 2



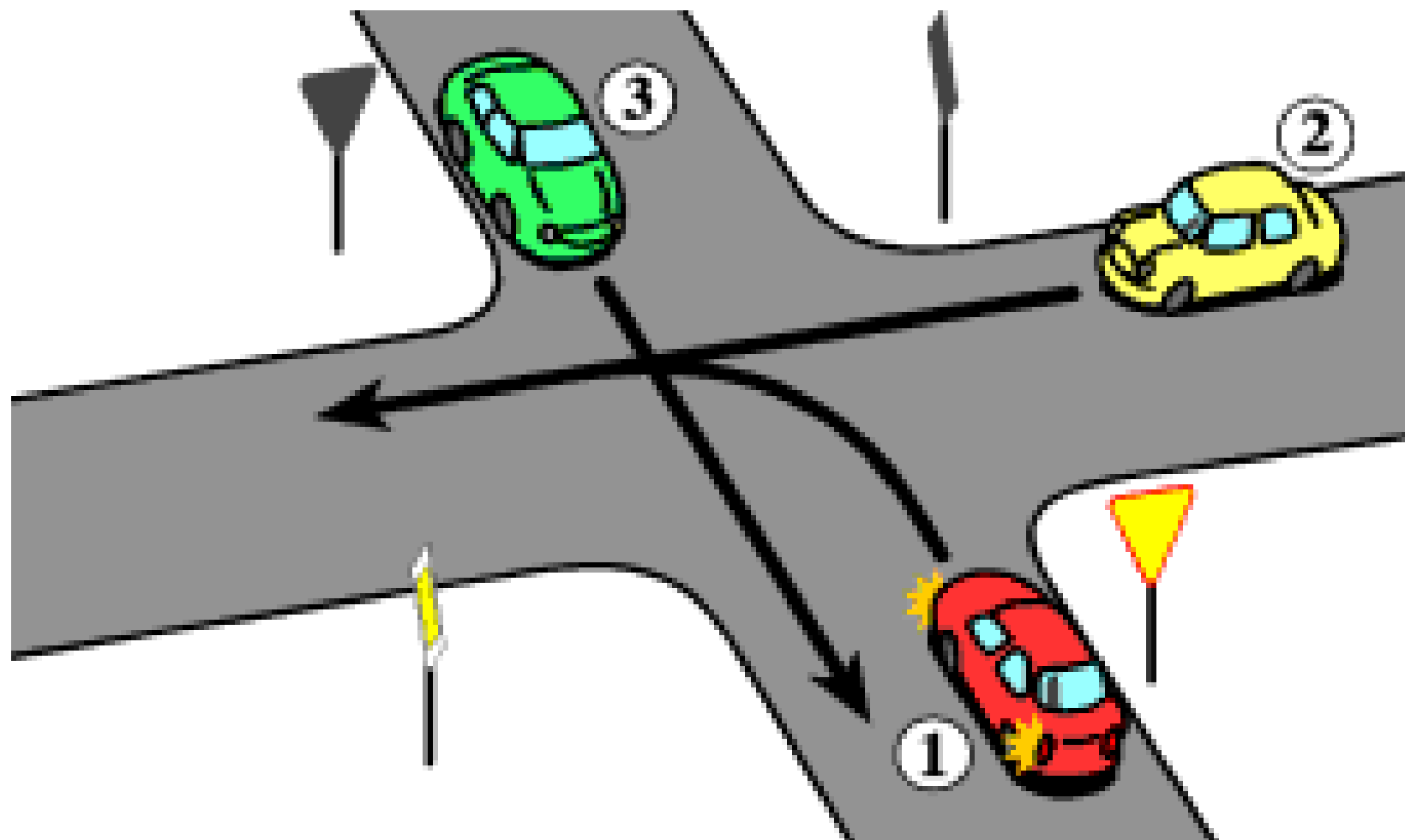


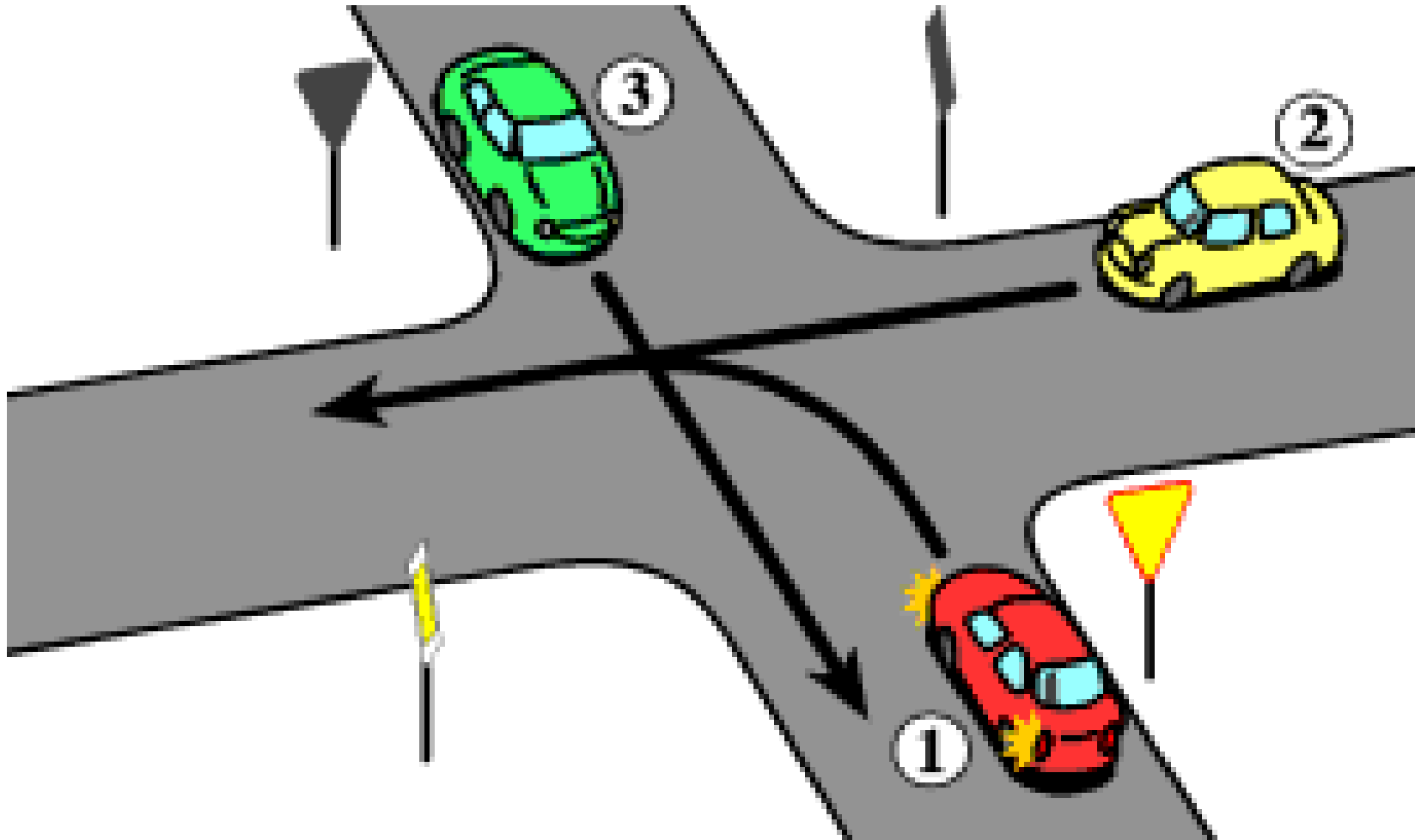
2, rower, 1





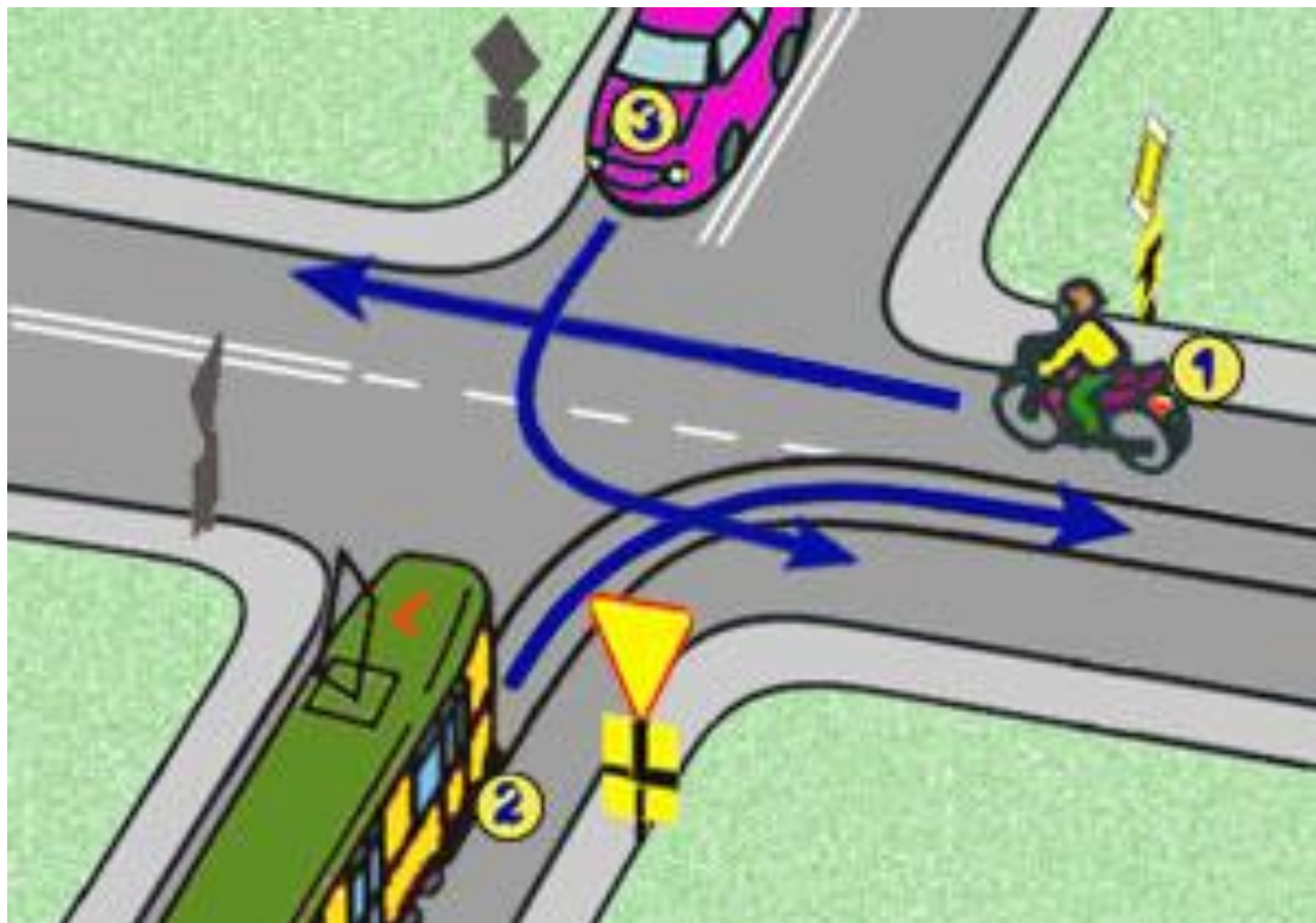
1, 2, rower  
(rower jedzie na końcu, ponieważ włącza się do ruchu)

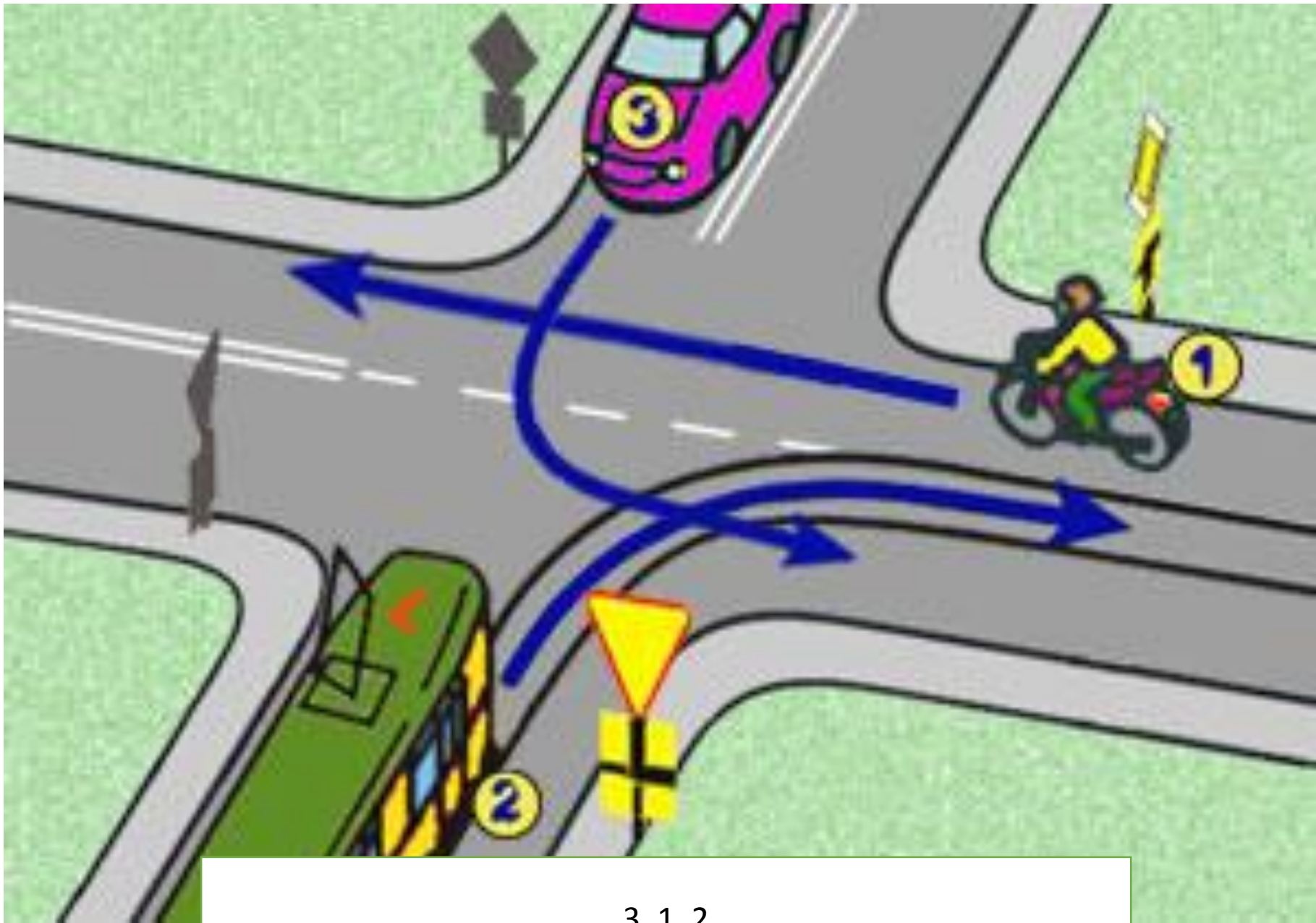




2, 3, 1

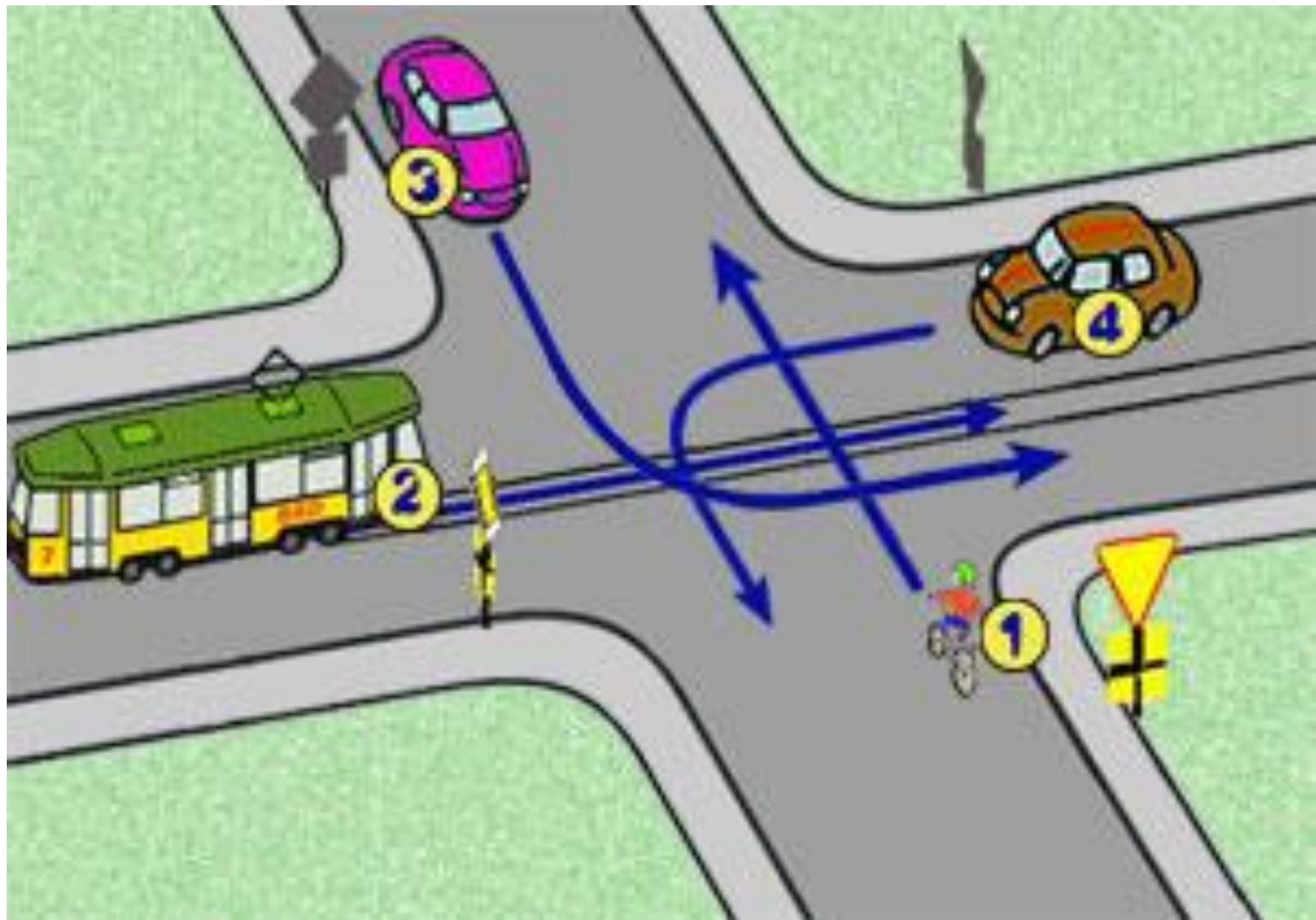


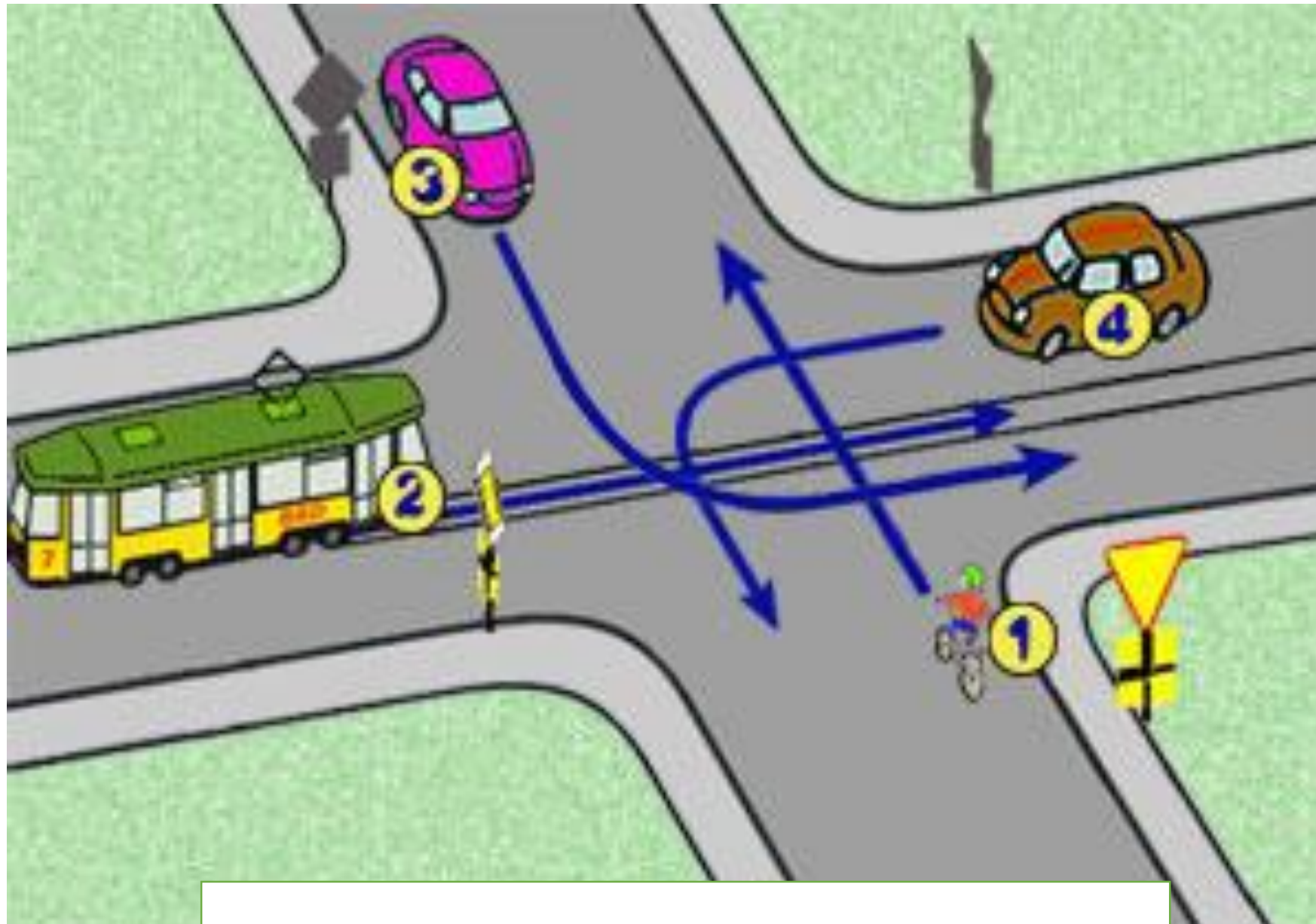




3, 1, 2

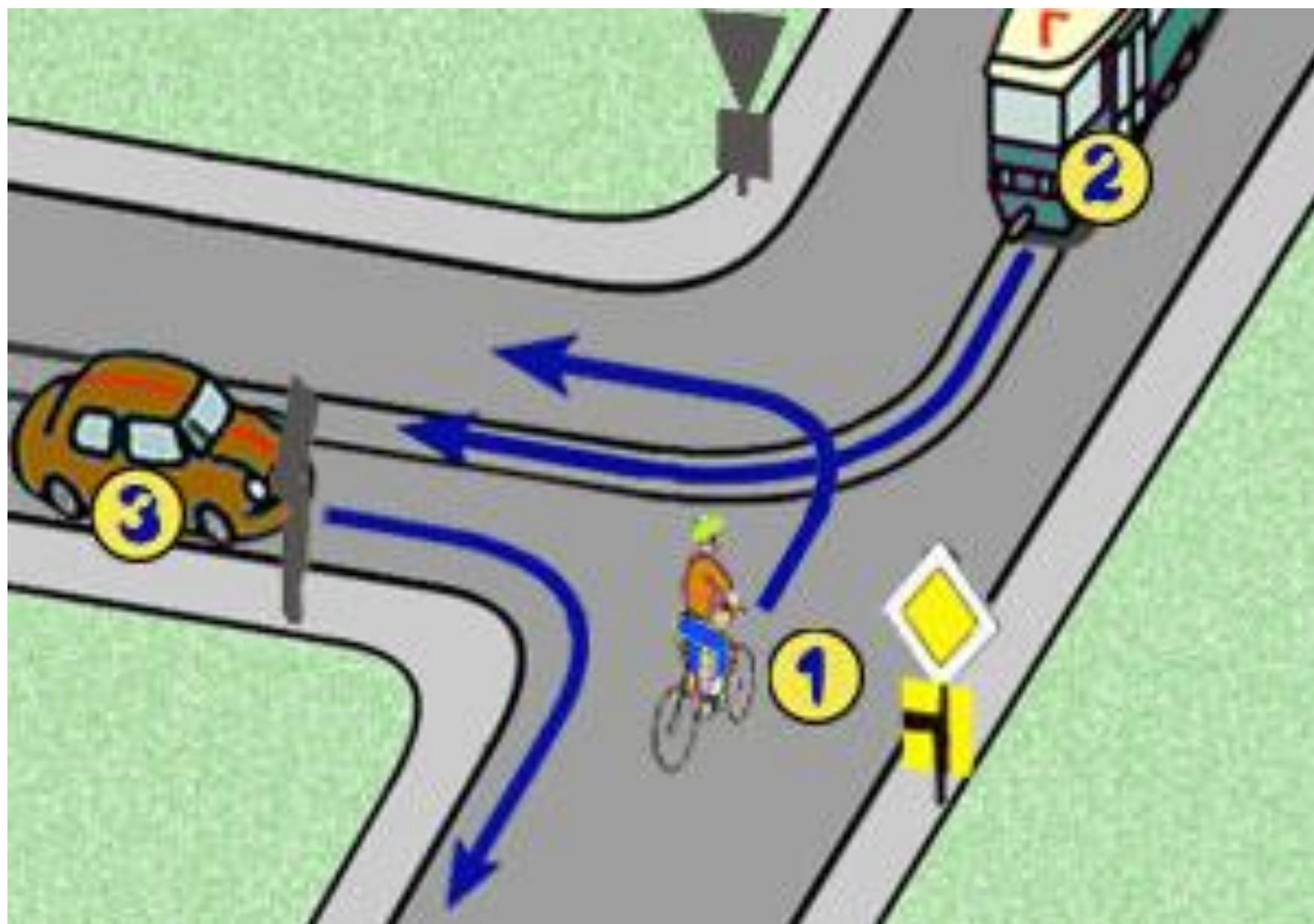


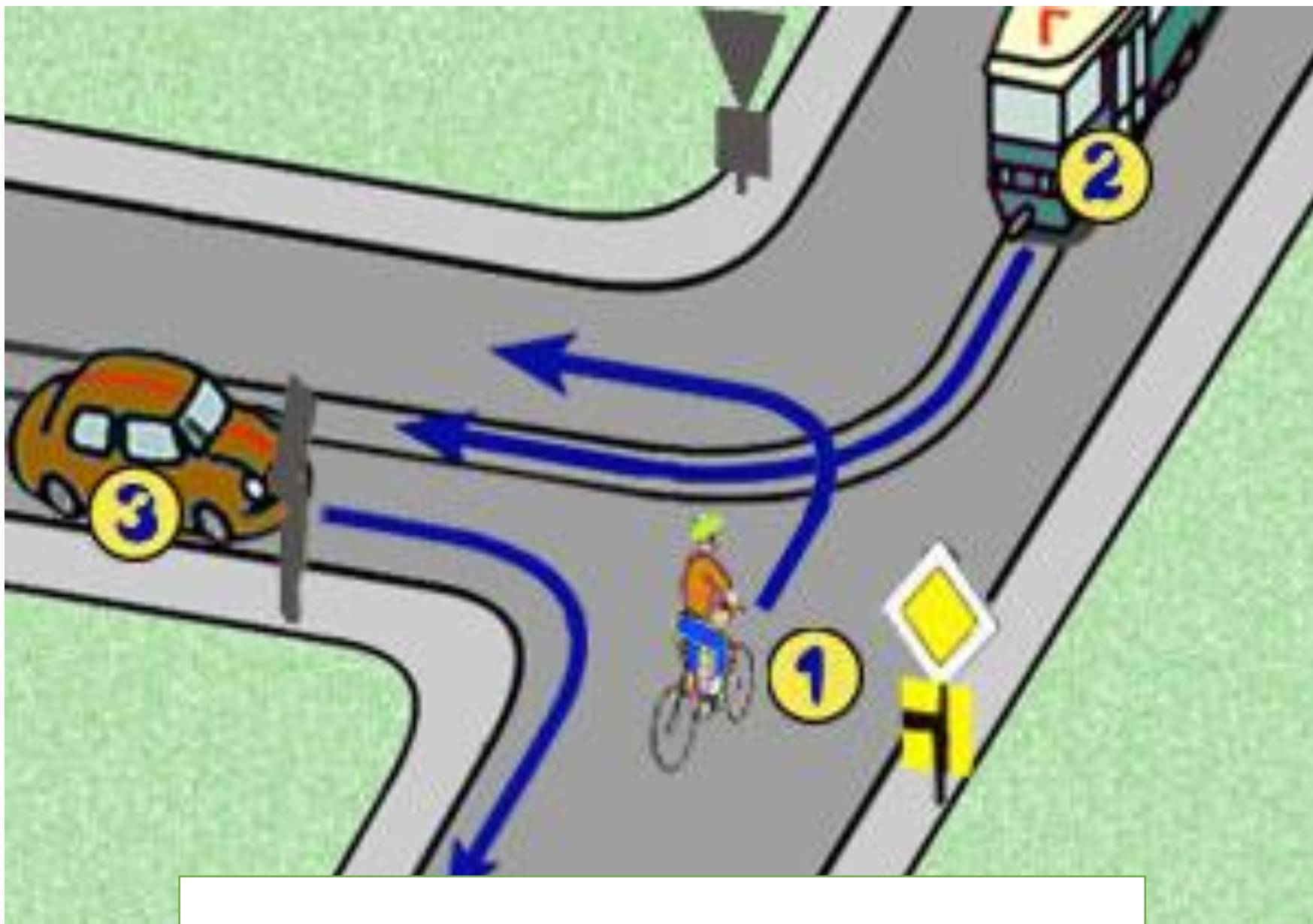




2, 3, 4, 1

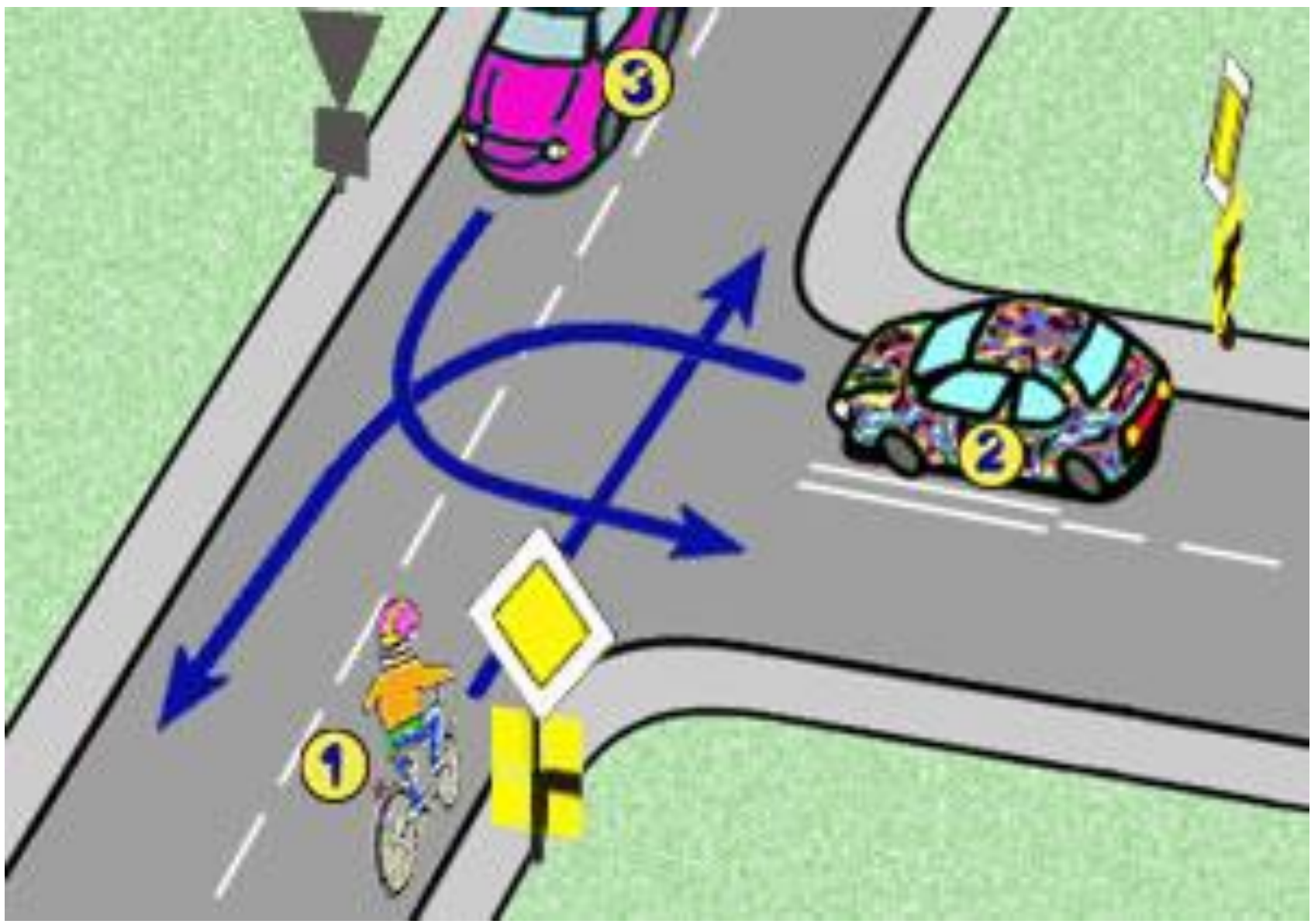


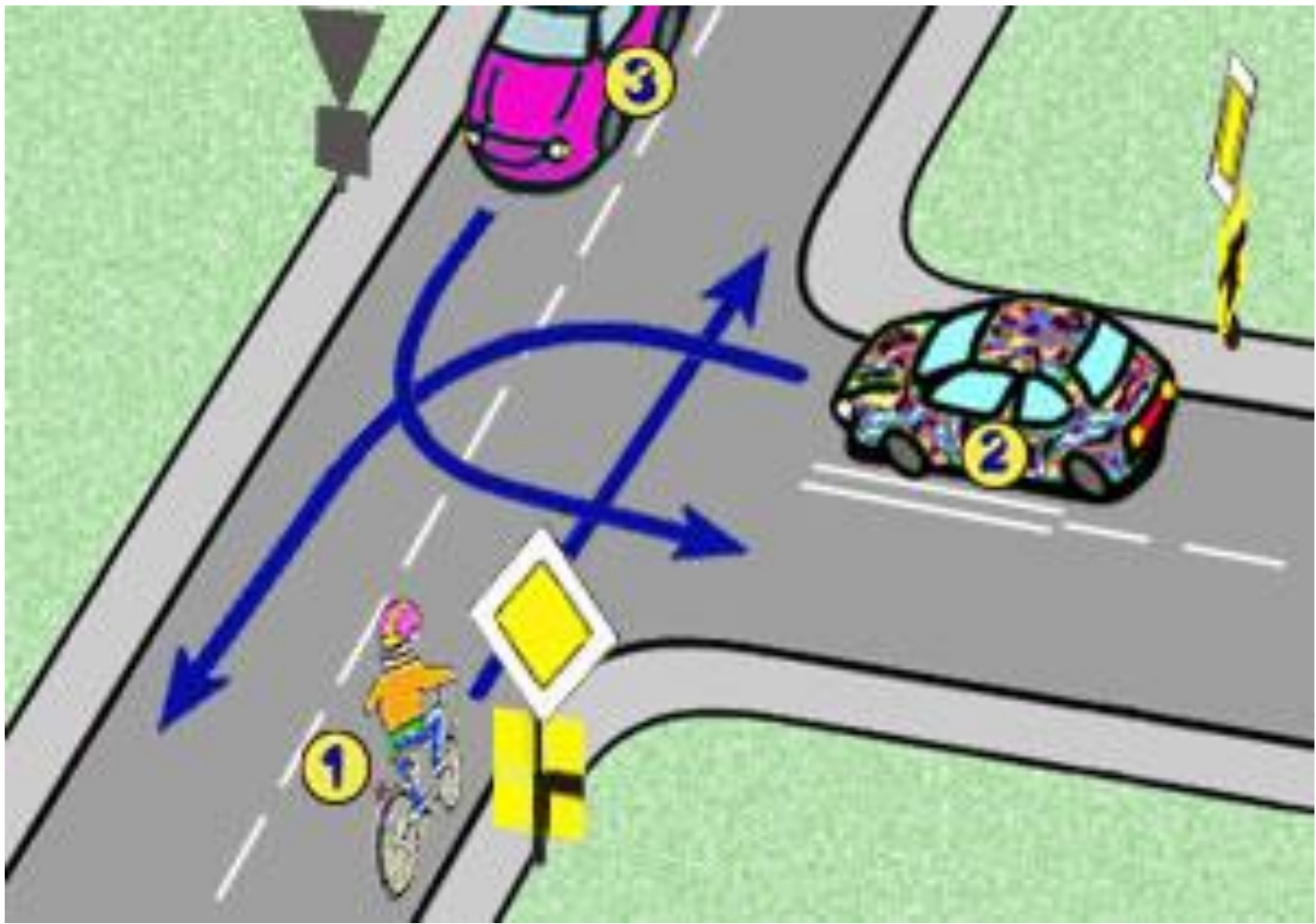




3 i 1 równocześnie, później 2.

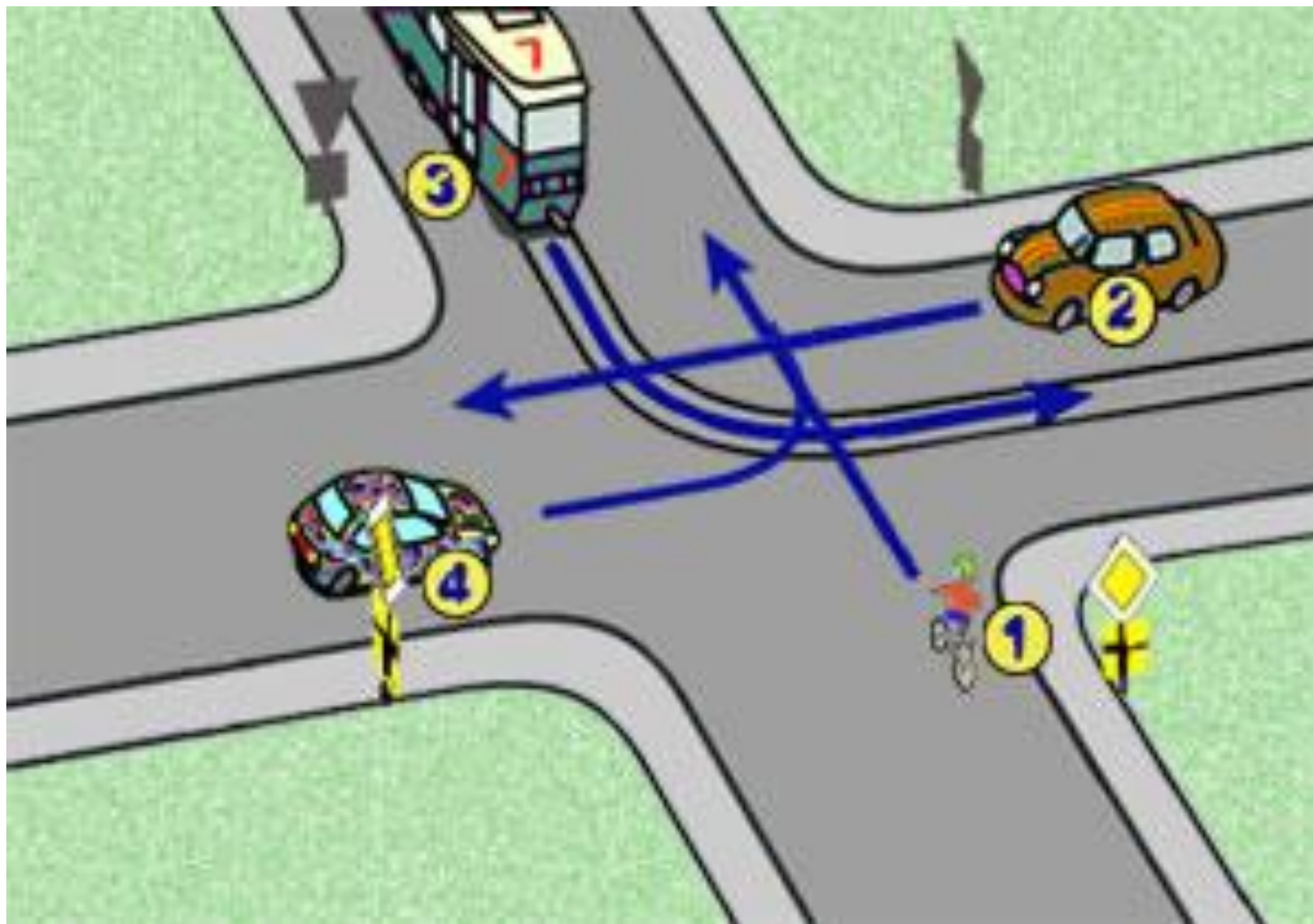


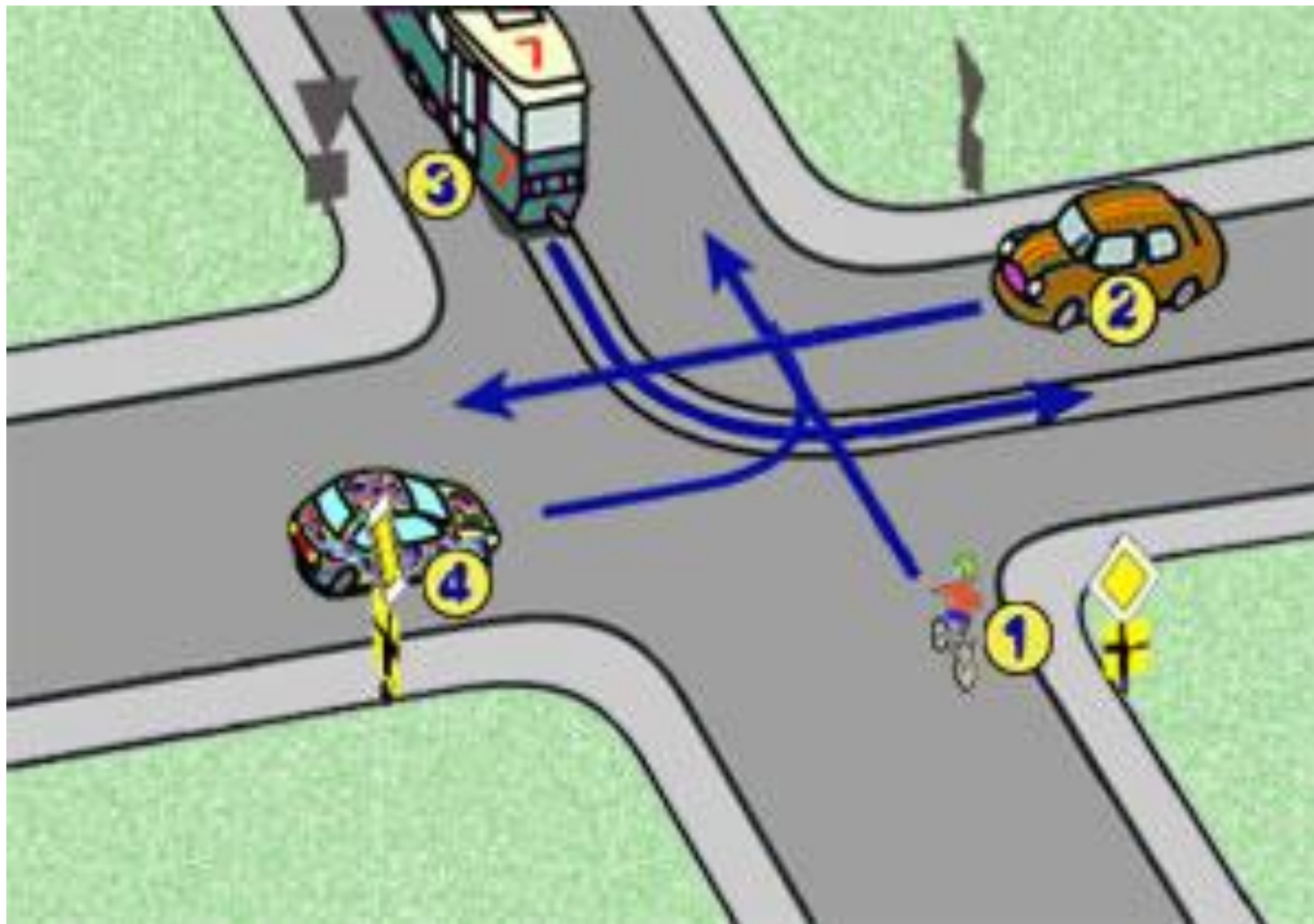




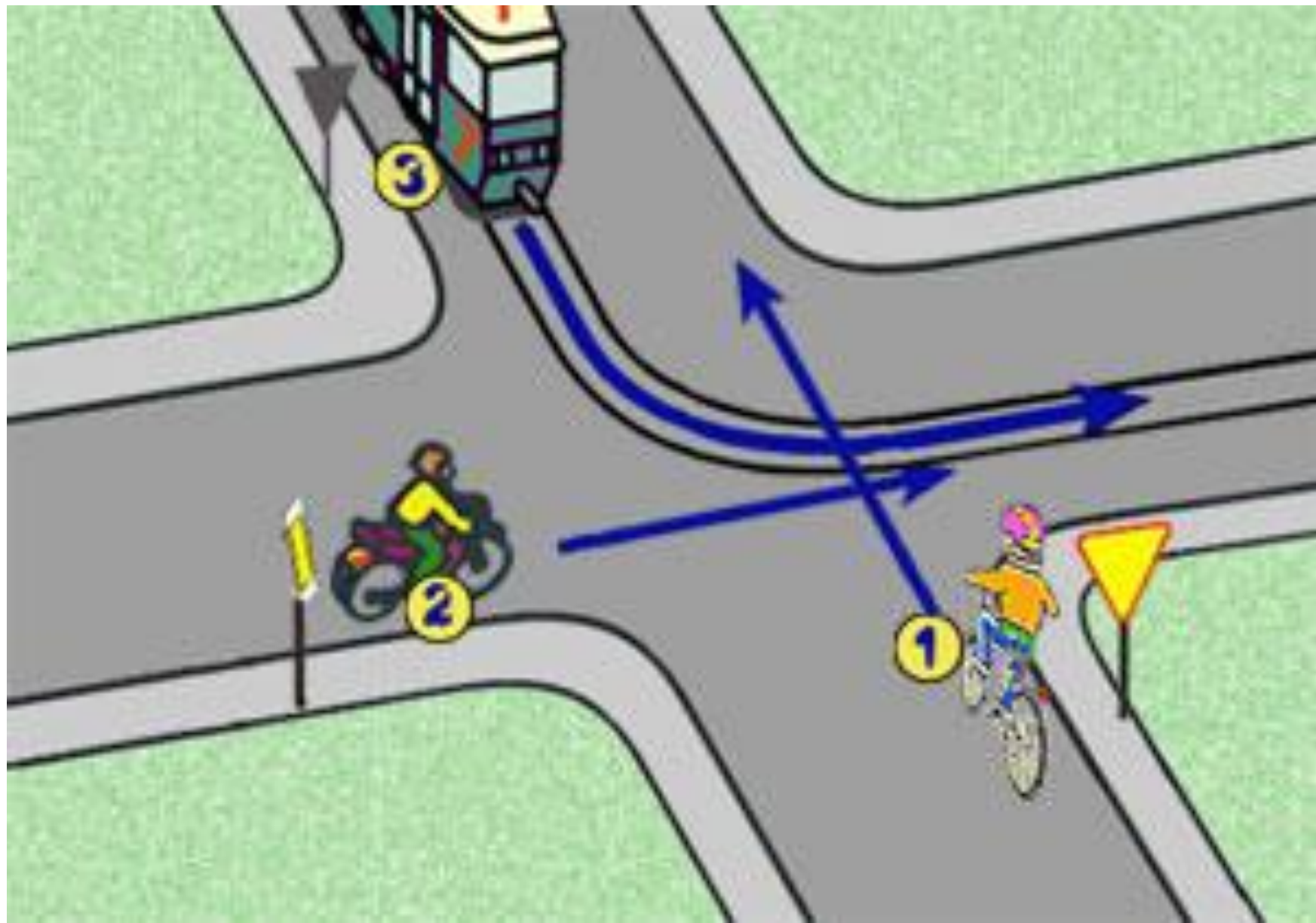
2, 1, 3



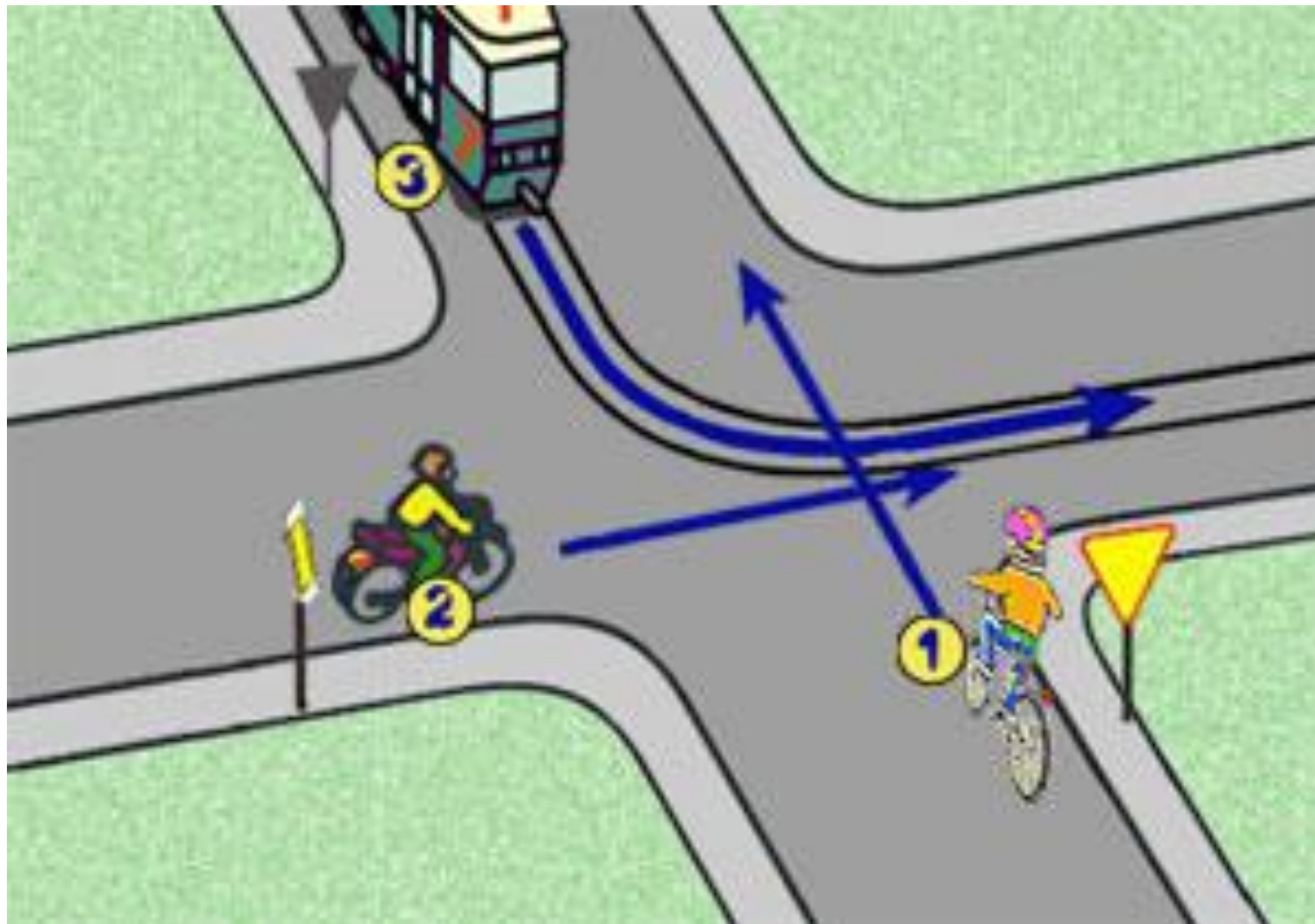




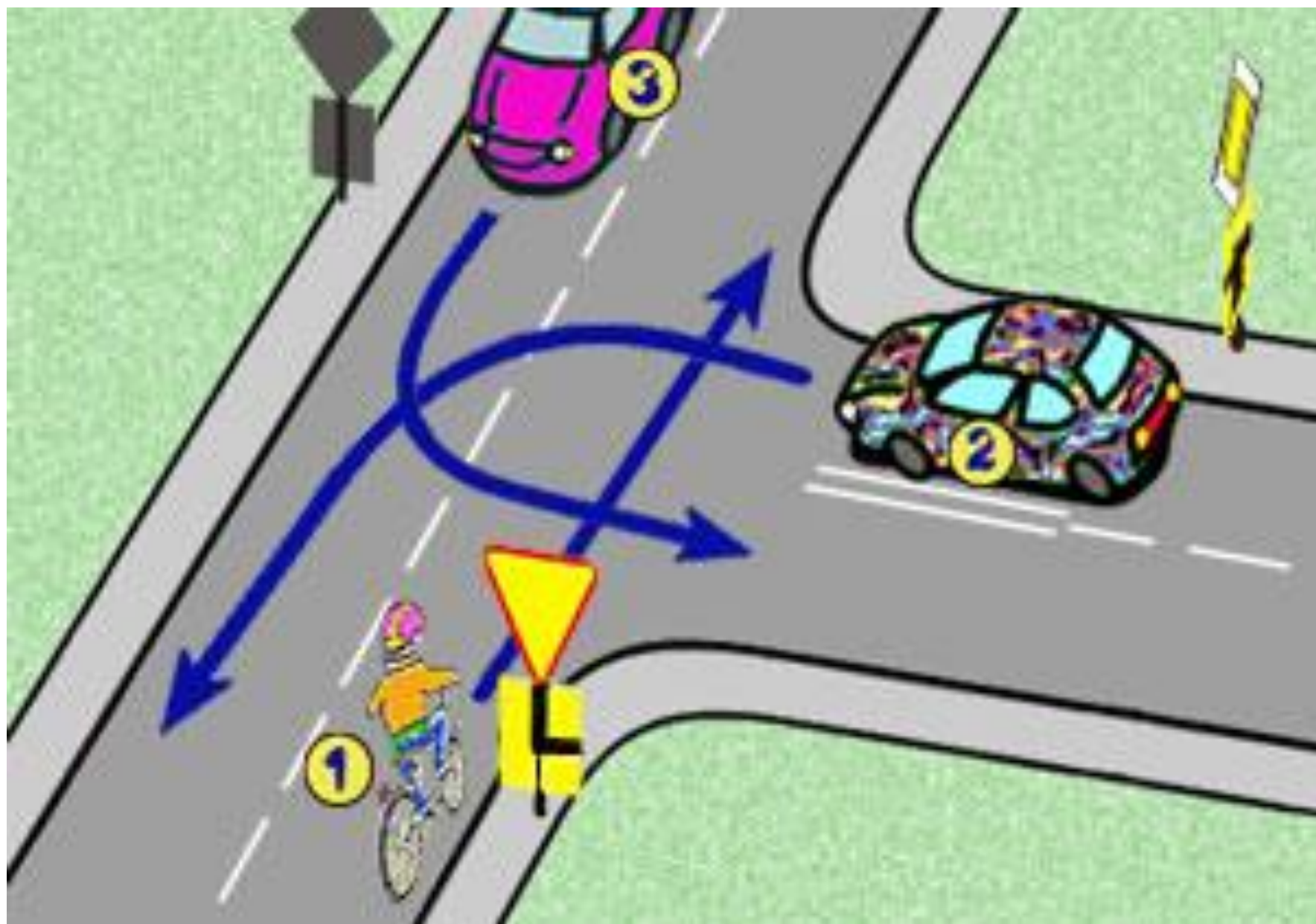
1, 4, 3, 2



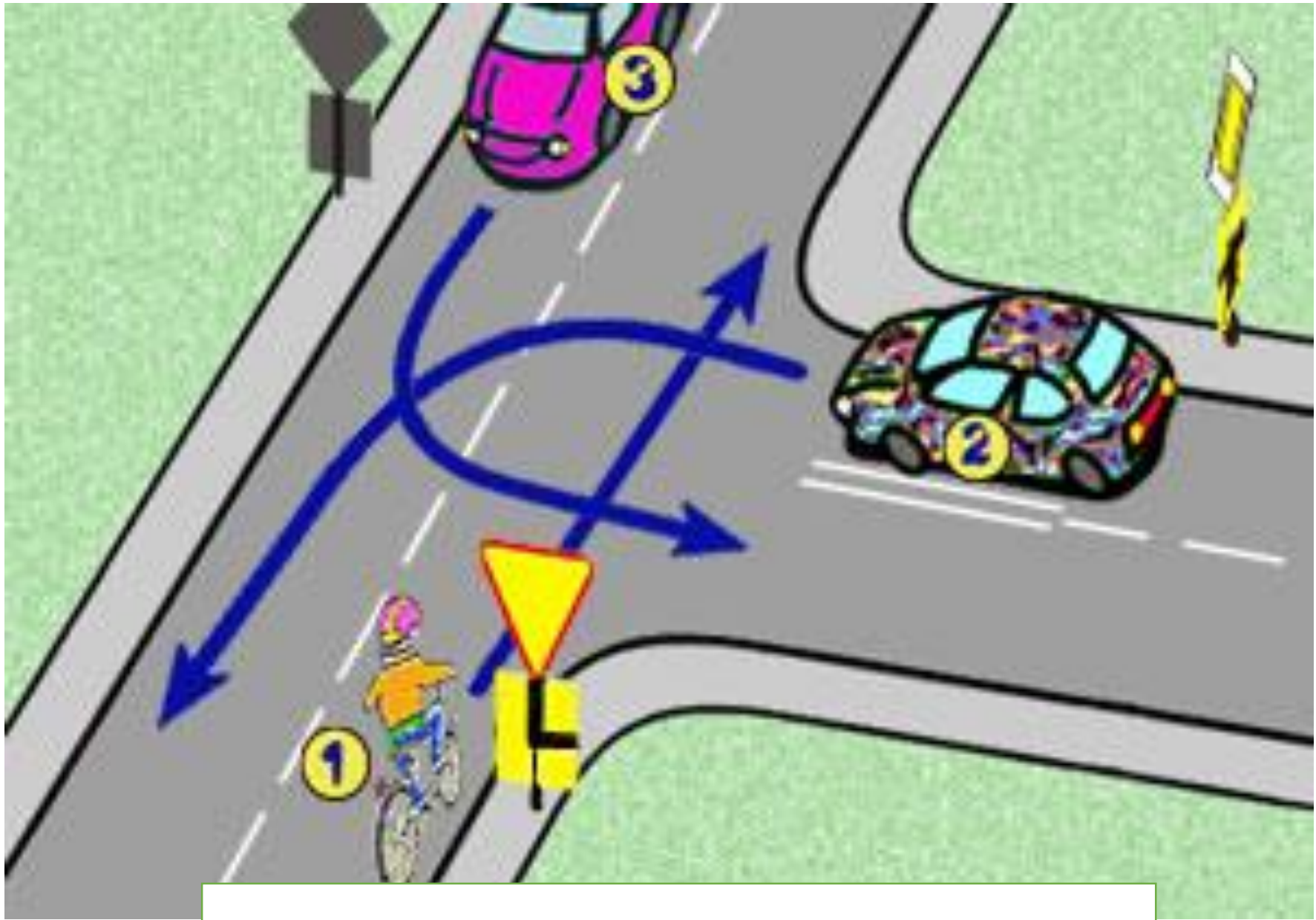




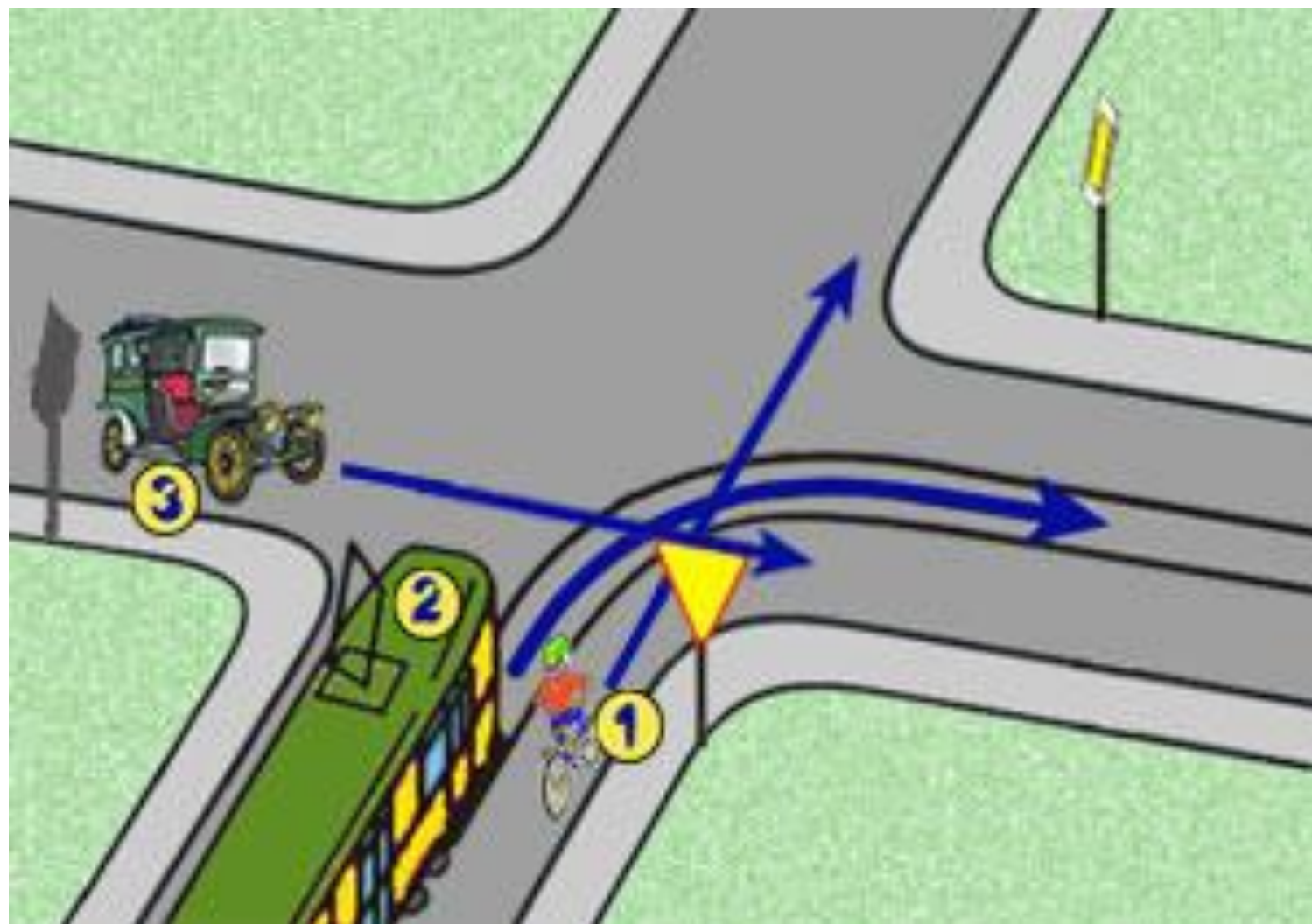
2, 1, 3

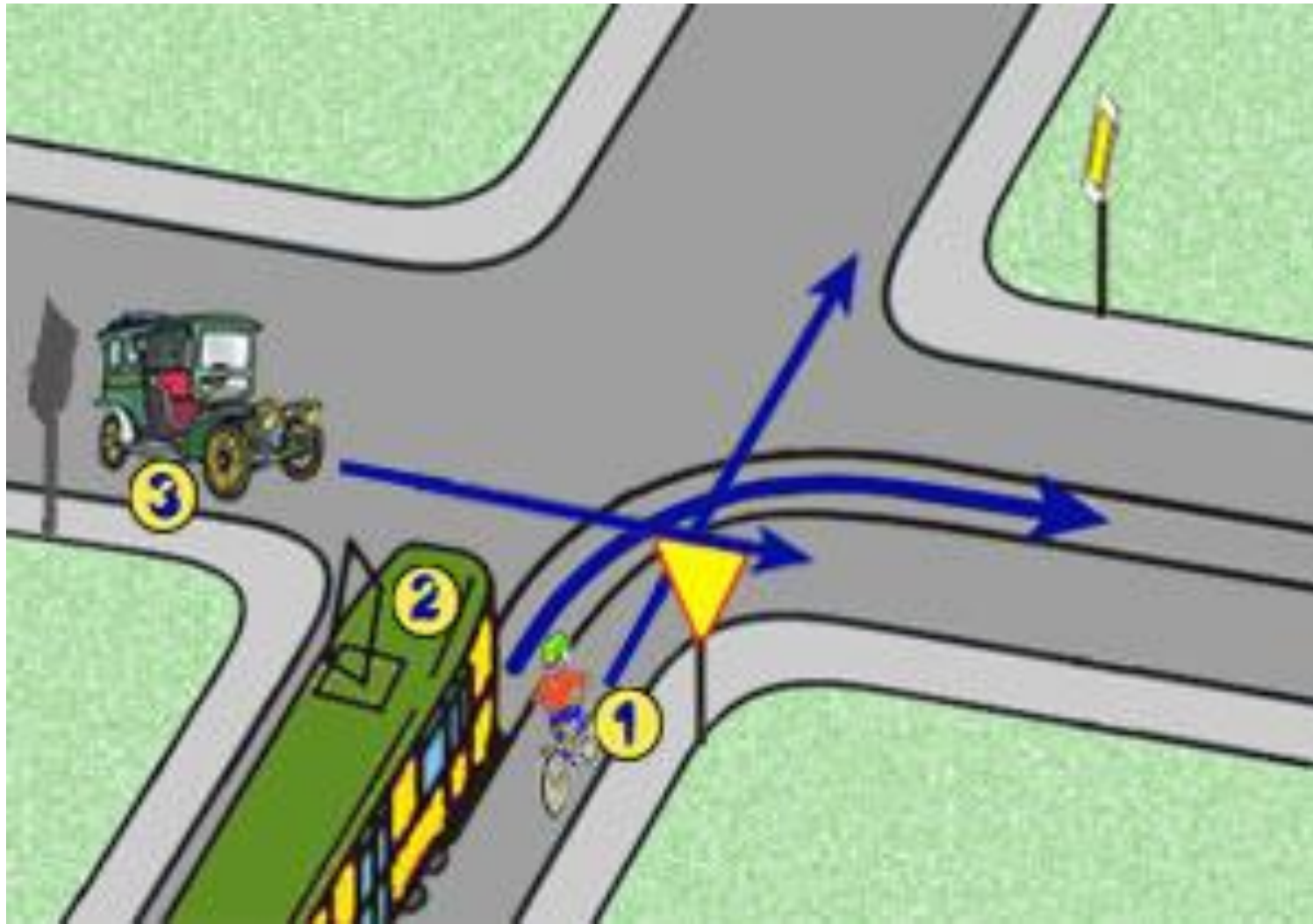






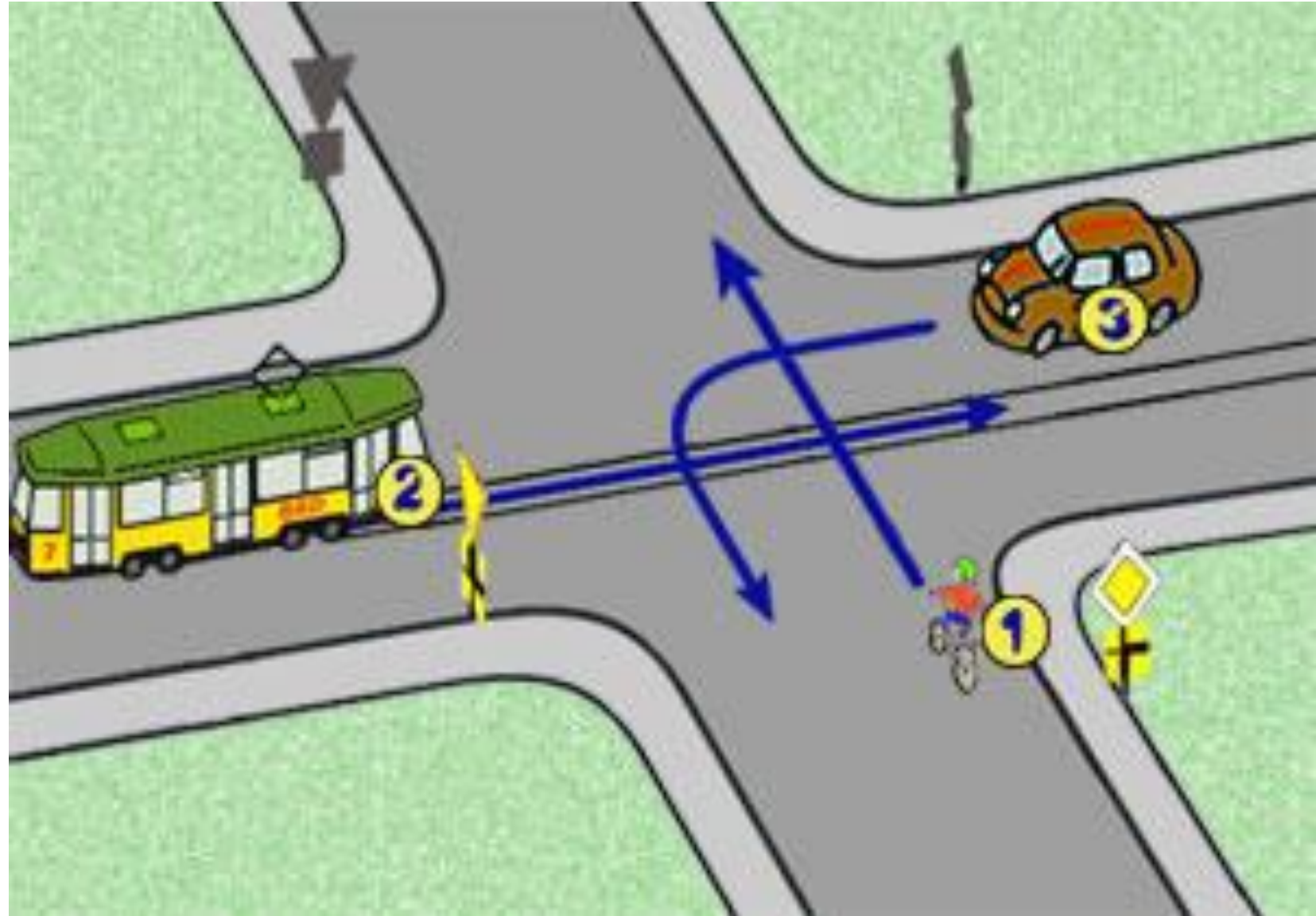
3, 2, 1

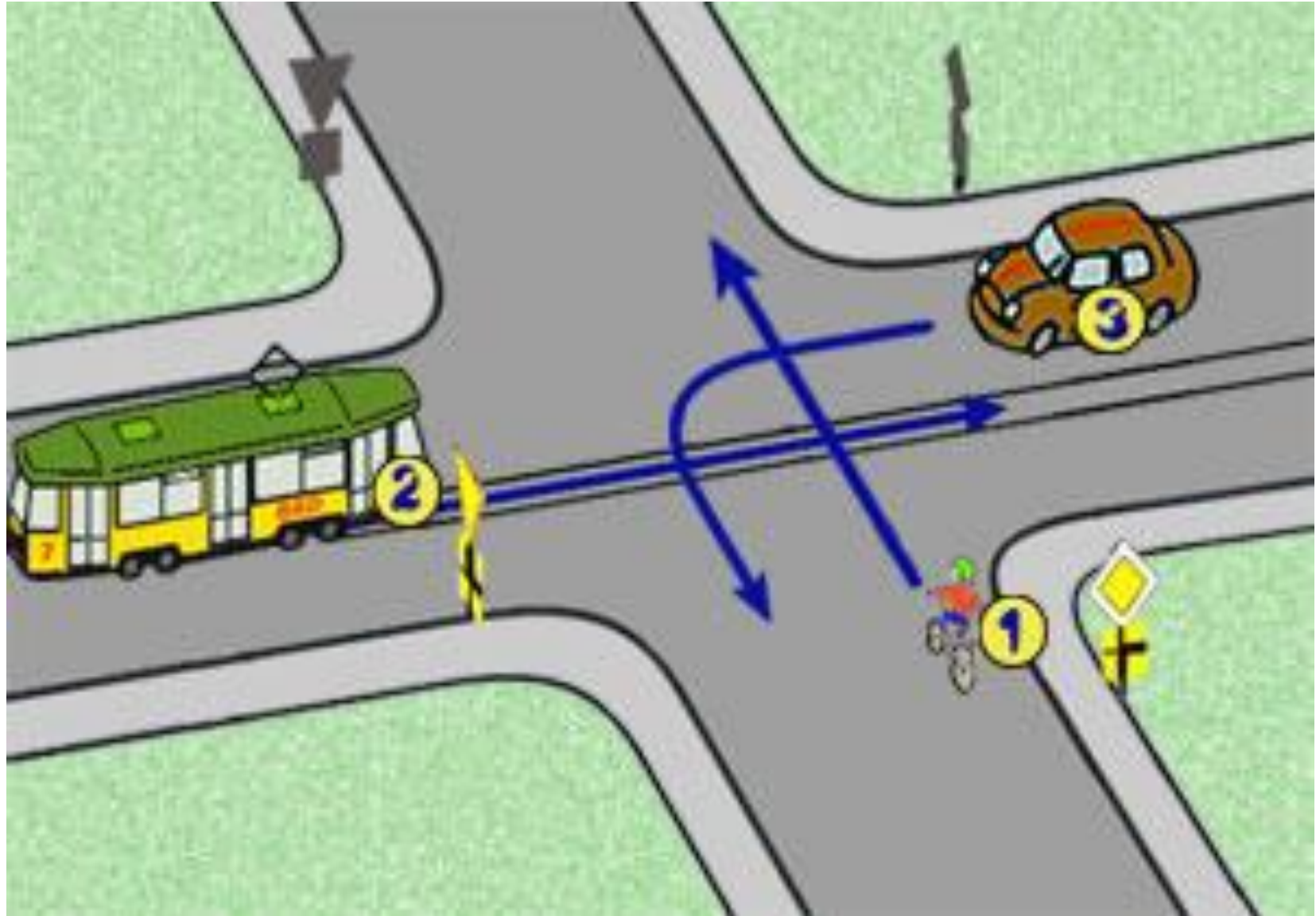




3, 1, 2







3, 1, 2